

SECTION C

GOOD PRODUCT FOR GOOD PEOPLE SINCE 1980

**Type C: Manufactured by PSI to original specifications
or redesigned by PSI**

These parts are either manufactured by ourselves to original specification, or we have designed an alternative. We ensure these parts will interface and operate in the same way the originals do. Examples of these parts and products include flame viewing systems, governor modules, logic cards, liquid fuel nozzles, fuel valves, blow off valve diaphragms, piping, thermocouples, and combustion chamber components.

STUD #022507 ◆


Part Number	Description	Qty. In Stock
#022507	STUD, 1/4 UNF X 1-1/8" SO	01
#022517	STUD, 3/8-24 X 3/4" SO	515
#022540	STUD, 1/2-20 X 1-1/4" SO	59
#022542	STUD, 1/2-20 X 1-1/2" SO	194
#022612	STUD, 5/16-24 X 1-15/16" SO	22


◆ **STEADY PEG #025412**

#025412	STEADY PEG, 3/8-24 X 1-3/4	1
---------	----------------------------	---


◆ **SPANNER(TOP) #025703**

◆ **TOMMY BAR(BOTTOM) #025804**

#025703	SPANNER, BOX TUBE, 9/16"	1
#025804	TOMMY BAR 3/8 X 6	1

Part availability as of April 2024 but subject to prior sale. Part condition is new unless otherwise stated.



◆ **STUD #027534**

Part Number	Description	Qty. In Stock
#027534	STUD, 3/8-24 X 1" SO	34
#027539	STUD, 3/8-24 X 1-5/8 SO	9
#028019	STUD, 3/8-24 X 1 SO	0
#028021	STUD, 3/8-24 X 1-1/4	7
#028023	STUD, 3/8-24 X 1-1/2	8
#028062	STUD, 5/8-18 X 1-5/8 SO	19

NUT #029153 ◆



#029153	NUT, HI TEMP, 3/8-24 321 SS	9
---------	-----------------------------	---



◆ **WASHER #036652**

#036652	WASHER, COPPER, 1/4 BSP	554
---------	-------------------------	-----

Part availability as of April 2024 but subject to prior sale. Part condition is new unless otherwise stated.

NIPPLE #037201 ◆



Part Number	Description	Qty. In Stock
#037201	NIPPLE, 1/4"	10



◆ **COUPLING #037602**

#037602	COUPLING, 1/4" BSP	14
---------	--------------------	----

TUBE #037957 ◆



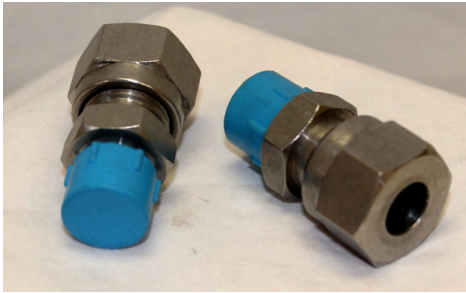
#037957	STOP END, 1" TUBE	17
---------	-------------------	----



◆ **STUD #038739**

#038739	STUD, 3/8-24 X 1-9/16 SO	8
---------	--------------------------	---

Part availability as of April 2024 but subject to prior sale. Part condition is new unless otherwise stated.



◆ **COUPLING #049610**

Part Number	Description	Qty. In Stock
#049610	COUPLING, 1/4 TU X 3/8 BSPM SS	22

PLUG #053119 ◆



#053119	PLUG, 3/8" BSP, SS	4
----------------	---------------------------	----------



◆ **KEY #057317**

#057317	KEY	1
----------------	------------	----------

SCREW #1512040 ◆



#151204010	SCREW, SKT HD, M4 X 10MM	40
-------------------	---------------------------------	-----------

Part availability as of April 2024 but subject to prior sale. Part condition is new unless otherwise stated.

NUT #211164004 ◆



Part Number	Description	Qty. In Stock
#211164004	NUT, 4"	10



◆ **LOCK NUT #215-65**

#215-65	LOCK NUT, ROTOR BEARING	0
---------	-------------------------	---

HELILOCK NUT #219-562-016 ◆



#219-562-016	HELILOCK NUT, M16	7
--------------	-------------------	---

Part availability as of April 2024 but subject to prior sale. Part condition is new unless otherwise stated.



◆ **STUD #500552**

Part Number	Description	Qty. In Stock
#500552	STUD, 1/2-20 X 3-3/16 SO	2
#500628	STUD, 1/2-20 X 4-7/8 SO	3
#500682	STUD, 3/8-24 X 6-1/2 SO	0

SCREW #500722 ◆



#500722	SCREW, HEX 3/8-24 X 4-1/4	11
---------	---------------------------	----



◆ **BOLT #500805**

#500805	BOLT, HEX 3/8-24 X 4"	1
---------	-----------------------	---

Part availability as of April 2024 but subject to prior sale. Part condition is new unless otherwise stated.

RING #500922 ◆



Part Number	Description	Qty. In Stock
#500922	RING, RETAINING 2.000 INT.	73



◆ **ROD END #500G217A**

#500G217A	END, ROD (NOSE)	9
-----------	-----------------	---

SHAFT #500G269A ◆



#500G269A	SHAFT, DRIVE	7
-----------	--------------	---

Part availability as of April 2024 but subject to prior sale. Part condition is new unless otherwise stated.



◆ **SHAFT #500G277**

Part Number	Description	Qty. In Stock
#500G277	SHAFT, OUTPUT	8

WASHER #503219 ◆



#503219	WASHER, 1/2" MOTION PIN	14
---------	-------------------------	----



◆ **DOWEL #505019**

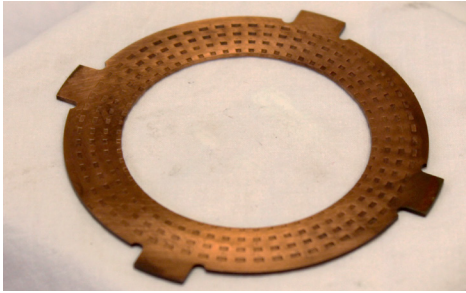
#505019	DOWEL, TAPPED, 1/2" X 1-1/2	6
---------	-----------------------------	---

Part availability as of April 2024 but subject to prior sale. Part condition is new unless otherwise stated.

STUD #505503 ◆


Part Number	Description	Qty. In Stock
#505503	STUD, 1/4-28 X 3/4 SO	7
#505504	STUD, 1/4-28 X 1-1/4 SO	19
#505505	STUD, 1/4-28 X 1-1/8 SO	1
#505506	STUD, 1/4-28 X 3-3/4 SO	1
#505510	STUD, 3/8-24 X 1-3/8 SO	180
#505513	STUD, 1/2-20 X 1-1/4 SO	0
#505531	STUD, 1/2-20 X 2" SO	4
#505546	STUD, 5/16-24 X 13/16 SO	4
#505574	STUD, 5/8-18 X 2-7/8 SO	2
#505575	STUD, 5/8-18 X 2-3/4 SO	3
#505576	STUD, 5/8-18 X 5-5/8 SO	1
#506628	STUD, 1/4-28 X 1-3/8 LG	5
#506632	STUD, 1/4-28 X 6" LG	11
#506633	STUD, 1/4-28 X 8-1/2 LG	7
#506677	STUD, 1/4-28 X 8" LG	5
#506681	STUD, 1/2-20 X 4-3/16 LG	17
#506698	STUD, 3/8" UNF X 4-3/8"	9

Part availability as of April 2024 but subject to prior sale. Part condition is new unless otherwise stated.



◆ **PLATE #5549-96**

Part Number	Description	Qty. In Stock
#5549-96	PLATE, OUTER CLUTCH	106

RING #5617-244 ◆



#5617-244	RING, CLUTCH	9
-----------	--------------	---



◆ **PIECE #5617-345**

#5617-345	PIECE, DISTANCE	7
-----------	-----------------	---

BUSH #60J-2656/1 ◆



#60J-2656/1	ROSEBIT BUSH, 1/2"	2
-------------	--------------------	---

Part availability as of April 2024 but subject to prior sale. Part condition is new unless otherwise stated.

DRILL BUSH #60J-2656/5 ◆



Part Number	Description	Qty. In Stock
#60J-2656/5	DRILL BUSH, 3/8"	2



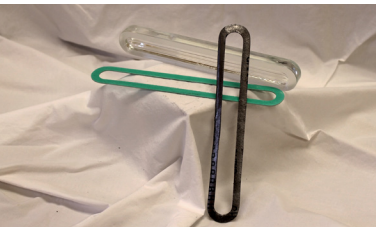
◆ **GASKET #64/03011014/3**

#64/03011014/3	GASKET, FLANGE 50.8 MM ID	23
----------------	---------------------------	----

FILTER #64/04001041/9 ◆



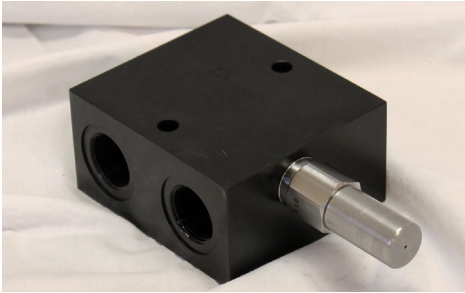
#64/04001041/9	FILTER ELEMENT, HP FUEL	0
----------------	-------------------------	---



◆ **SIGHT GLASS #64/05012014/2**

#64/05012014/2	SIGHT GLASS OIL LEVEL	1
----------------	-----------------------	---

Part availability as of April 2024 but subject to prior sale. Part condition is new unless otherwise stated.



◆ **RELIEF VALVE #64/05013017/1**

Part Number	Description	Qty. In Stock
#64/05013017/1	VALVE,RELIEF,LIQ.FUEL SYSTEM	1

CABLE #64/07010027/2 ◆



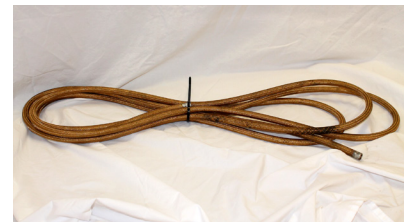
#64/07010027/2	CABLE, THERMOCOUPLE	70
----------------	---------------------	----



◆ **CABLE #64/07010039/1**

#64/07010039/1	CABLE, IGNITION	860
----------------	-----------------	-----

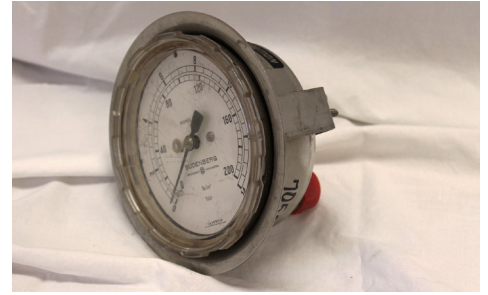
CONDUIT #64/07010083/1 ◆



#64/07010083/1	CONDUIT	6436
----------------	---------	------

Part availability as of April 2024 but subject to prior sale. Part condition is new unless otherwise stated.

GAUGE #64/60001021/5 ◆



Part Number	Description	Qty. In Stock
#64/60001021/5	GAUGE, 0-100 PSI / 0-7 BAR	2



◆ **DRILL BUSH #66J2053**

#66J2053	DRILL BUSH, 8 MM	3
----------	------------------	---

GLAND #755688 ◆



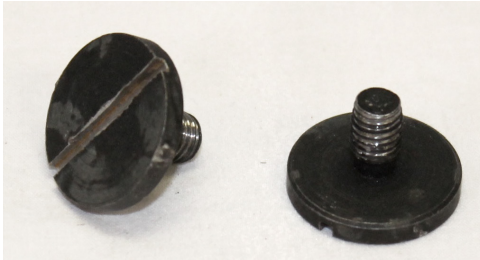
#755688	GLAND, HAWKE	0
---------	--------------	---



◆ **TAP #83L-9864**

#83L-9864	TAP, 1/4" UNF BOTTOM	1
#83L-9867	TAP, 5/16" UNF BOTTOM	1

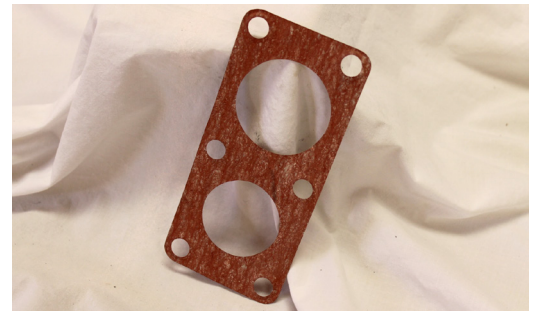
Part availability as of April 2024 but subject to prior sale. Part condition is new unless otherwise stated.



◆ **SCREW #CT-101/11**

Part Number	Description	Qty. In Stock
#CT-101/11	SCREW, RETAINING, 1/4-28 X 3/8	4
#CT-101/6	SCREW, RETAINING 1/4-28 X 5/16	12

JOINT #CT-1037 ◆



#CT-1037	JOINT	1
#CT-1037F	STUD, 1/2-20 X 4-7/8 SO	9
#CT-1049/1	STUD, 3/8-24 X 6-1/2 SO	9



◆ **COUPLING #CT-1060/3**

#CT-1060/3	BOLT, COUPLING, 5/8-18	10
------------	------------------------	----

Part availability as of April 2024 but subject to prior sale. Part condition is new unless otherwise stated.

STUD COUPLING #CT-1063/1 ◆



Part Number	Description	Qty. In Stock
#CT-1063/1	STUD COUPLING AND FILTER	2



◆ **LOCKING PLATE #CT-109A/1**

#CT-109A/1	LOCKING PLATE, 4.156 X .875	24
#CT-109A/2	LOCKING PLATE, 5.750 X 1.125	33
#CT-109A/5	LOCKING PLATE, 2.125 X .500	77

Part availability as of April 2024 but subject to prior sale. Part condition is new unless otherwise stated.



◆ **STANDPIPE #CT-119/1**

Part Number	Description	Qty. In Stock
#CT-119/1	STANDPIPE, 1/2 TU TO 1/2 BSP	2
#CT-119/62	STANDPIPE, 1/4 TU TO 1/4 BSP	1
#CT-119/64	STANDPIPE, 1/4 TU TO 3/4-16	2
#CT-119/73	STANDPIPE, 1/2 TU TO 3/4-16	0
#CT-119E/3	STANDPIPE, 7/16 TU TO 1/4 BSPT	3
#CT-119E/4	STANDPIPE, 1/4 TU TO 1/8 BSPT	5

Part availability as of April 2024 but subject to prior sale. Part condition is new unless otherwise stated.

BOLT #CT-121/1 ◆


Part Number	Description	Qty. In Stock
#CT-121/1	BOLT, FITTING 3/8-24 X 3-31/32	0
#CT-121/103	BOLT, FITTING 5/8-18 X 2-1/4	17
#CT-121/2	BOLT, FITTING 3/8-24 X 1-5/8	11
#CT-121/51	BOLT, FITTING 1/2-20 X 2-1/16	4
#CT-121/52	BOLT, FITTING 1/2-20 X 2-5/8	38
#CT-121/602	BOLT, FITTING 5/16-24 X 2-1/4	4
#CT-121/750	BOLT, FITTING 5/8-18 X 2-1/2	20


◆ **SLEEVE #CT-129/17**

#CT-129/17	SLEEVE	15
------------	--------	----

TABWASHER #CT-130A/6 ◆


#CT-130A/6	TABWASHER, 7/8" S.S.	172
#CT-130G/1	TABWASHER, 1-1/4" LOCK	480

Part availability as of April 2024 but subject to prior sale. Part condition is new unless otherwise stated.



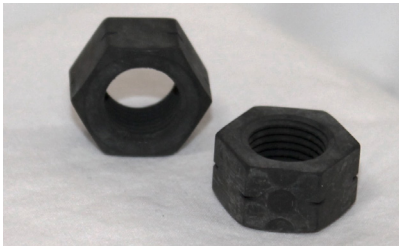
◆ **SPRING #CT-133/234**

Part Number	Description	Qty. In Stock
#CT-133/234	SPRING, 1.941 X 2-7/16 LG	8
#CT-133/240	SPRING, 1.125 X 2-9/16 LG	0
#CT-133/245	SPRING, .842 X 3-7/16 LG	8
#CT-133/250	SPRING, .850 X 6.10 LG	24
#CT-133/270	SPRING, 3.352 X 3.625 LG	7
#CT-133/273	SPRING, 3.176 X 9.125 LG	15
#CT-133/282	SPRING, 1.034 X 1.250 LG	8
#CT-133/284	SPRING, 3.250 X 9.125 LG	10
#CT-133/286	SPRING, .432 X 1.250 LG	12
#CT-133/289	SPRING, 3.234 X 9.125 LG	3
#CT-133/291	SPRING, 2.288 X 2.446 LG	7
#CT-133/294	SPRING, 1.635 X 7-1/32 LG	9
#CT-133/301	SPRING, 1.028 X 2.00 LG	2
#CT-133/302	SPRING, 1.301 X 4.188 LG	10
#CT-133/321	SPRING, 830 X 1.625 LG	6
#CT-133/322	SPRING, .794 X 2.250 LG	1
#CT-133/9	SPRING, .462 X 1-1/4 LG	0
#CT-133A/1	SPRING, 1.164 X 2.25 LG	8
#CT-133A/10	SPRING, .970 X 2.264 LG	5
#CT-133A/13	SPRING, .432 X 1.250 LG	5
#CT-133A/21	SPRING, .864 X 2.046 LG	8
#CT-133A/6	SPRING, .642 X 1.52 LG	3

Part availability as of April 2024 but subject to prior sale. Part condition is new unless otherwise stated.

BOSS #CT-135C/5 ◆


Part Number	Description	Qty. In Stock
#CT-135C/5	BOSS, 1/2-20 X 7/8 X 9/16 LG	3


◆ **NUT #CT-138/5**

#CT-138/5	NUT, 3/8-24	42
#CT-138/6	NUT, 1/2-20	297
#CT-138/7	NUT, 5/8-18	90
#CT-138/8	NUT, 3/4-16	32

BOLT #CT-139/101 ◆


#CT-139/101	BOLT, 1/2-20 X 2-11/16 TAPER	8
#CT-139/103	BOLT, 1/2-20 X 2-15/16 TAPER	1
#CT-139/202	FITTING BOLT	2
#CT-139/51	BOLT, 3/8-24 X 2-3/8 TAPER	11
#CT-139C/1	BOLT, 1/2-20 X 2-7/8 TAPER	19
#CT-139C/2	BOLT, 3/4-16 X 3-3/16 TAPER	20

Part availability as of April 2024 but subject to prior sale. Part condition is new unless otherwise stated.



◆ **WASHER #CT-148/14**

Part Number	Description	Qty. In Stock
#CT-148/14	WASHER, 3/8" SS SPECIAL	315
#CT-148/3	WASHER, 3/8" SS SPECIAL	2621

STUD #CT-162/160 ◆

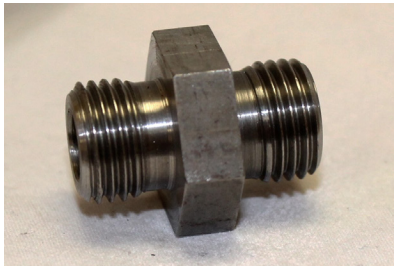


#CT-162/160	STUD, 1/2-20 X 3-3/4" SO	1
#CT-162/2	STUD, 1/4-28 UNF X 6"	4
#CT-162/204	STUD, 5/8-18 X 2-17/32" SO	19
#CT-162/210	STUD, 5/8-18 X 2-3/4" SO	27
#CT-162/211	STUD, 5/8-18 X 2" SO	7
#CT-162/3	STUD, 1/4-28 X 8-1/2"	9
#CT-162/4	STUD, 1/4-28 X 8"	2
#CT-162A/12	STUD, 2 BA X 1.625" SS	0
#CT-162D/3	STUD, 3/8-24 X 1-1/4" SO	18
#CT-162D/4	STUD, 1/2-20 X 1-3/8" SO	3

Part availability as of April 2024 but subject to prior sale. Part condition is new unless otherwise stated.

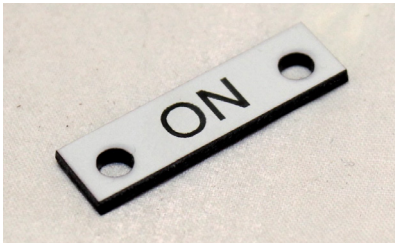
BOLT #CT-168/166 ◆


Part Number	Description	Qty. In Stock
#CT-168/166	BOLT, 3/8-24 X 2-5/8" LG	3
#CT-168/206	BOLT, 1/2-20 X 2" LG	50
#CT-168/211	BOLT, FITTING	25
#CT-168/220	BOLT, 1/2-20 X 1-5/8" LG	16
#CT-168/7	BOLT, 1/4-28 X 2" LG	1
#CT-168B/26	BOLT, 5/16-24 X 1-1/4" LG SS	12
#CT-168B/27	BOLT, 5/16-24 X 3/4" LG SS	0


◆ **ADAPTOR #CT-169F/4**

#CT-169F/4	ADAPTOR	1
------------	---------	---

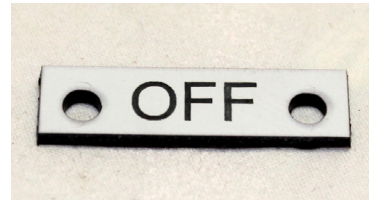
Part availability as of April 2024 but subject to prior sale. Part condition is new unless otherwise stated.



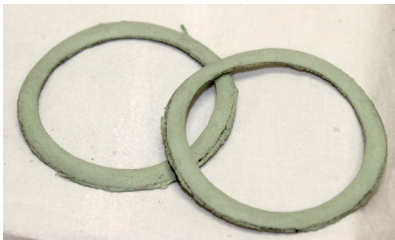
◆ **NAMEPLATE #CT-185/152B**

Part Number	Description	Qty. In Stock
#CT-185/152B	NAMEPLATE, 'ON'	20

NAMEPLATE #CT-185/153B ◆



#CT-185/153B	NAMEPLATE, 'OFF'	20
--------------	------------------	----



◆ **JOINT #CT-186**

#CT-186	JOINT, 1-9/16" SIGHT WINDOW	0
#CT-186C/1	JOINT, 17/32" SIGHT WINDOW	0
#CT-186C/2	JOINT, 5/8" SIGHT WINDOW	13
#CT-186D/6	JOINT, 27/32" SIGHT WINDOW	2
#CT-186E/2	JOINT, 5/8" SIGHT WINDOW	28
#CT-186E/3	JOINT, 1-7/16" SIGHT WINDOW	14

Part availability as of April 2024 but subject to prior sale. Part condition is new unless otherwise stated.

SIGHT GLASS #CT-188 ◆


Part Number	Description	Qty. In Stock
#CT-188	SIGHT GLASS, 1-31/32	18
#CT-188A	SIGHT GLASS, 2-15/16	0
#CT-188E	SIGHT GLASS, 1"	18


◆ **DOWEL #CT-190/1**
Dowel page A

#CT-190/1	DOWEL, 1/4" X 3/4", 4 BA	16
#CT-190/101	DOWEL, 1/2" X 1-3/4", 1/4-28	14
#CT-190/104	DOWEL, 1/2" X 2-1/8", 1/4-28	1
#CT-190/105	DOWEL, 1/2" X 2-1/8", 1/4-28	24
#CT-190/107	DOWEL, 1/2" X 1-1/4", 1/4-28	14
#CT-190/109	DOWEL, 1/2" X 1-1/4", 1/4-28	4
#CT-190/112	DOWEL, 1/2" X 1-1/2", 1/4-28	28
#CT-190/2	DOWEL, 1/4" X 5/8", 4 BA	4
#CT-190/26	DOWEL, 5/16" X 1/2", 2 BA	5
#CT-190/28	DOWEL, 5/16" X 3/4", 2 BA	91
#CT-190/5	DOWEL, 1/4" X 1/4", 4 BA	2
#CT-190/51	DOWEL, 3/8" X 3/4", 1/4-28	12
#CT-190/52	DOWEL, 3/8" X 7/8", 1/4-28	0

Part availability as of April 2024 but subject to prior sale. Part condition is new unless otherwise stated.



◆ **DOWEL #CT-190/1**

Dowel page B

Part Number	Description	Qty. In Stock
#CT-190/54	DOWEL, 3/8" X 1-1/2", 1/4-28	5
#CT-190/60	DOWEL, 3/8" X 3/4", 1/4-28	2
#CT-190/61	DOWEL, 3/8" X 3-1/4", 1/4-28	5
#CT-190/62	2DOWEL, 3/8" X 7/8", 1/4-28	8
#CT-190/64	DOWEL, 3/8" X 1", 1/4-28	128
#CT-190A/104	DOWEL, 1/2" X 1-7/16", 1/4-28	31
#CT-190A/108	DOWEL, 1/2" X 1-1/4", 1/4-28	20
#CT-190A/56	DOWEL, 3/8" X 13/16", 1/4-28	18
#CT-190A/59	DOWEL, 3/8" X 3/4", 1/4-28	67
#CT-190C/1	DOWEL, 3/8" X 7/8", 2 BA	4

SETSCREW #CT-232D/1 ◆



#CT-232D/1	SETSCREW, 3/8-24 X 2-1/4	5
------------	--------------------------	---



◆ **VALVE #CT-245A**

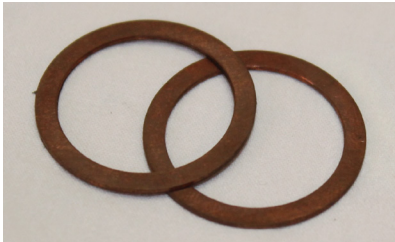
#CT-245A	VALVE, SHUT OFF	3
#CT-248C/1	VALVE, NON-RETURN, 5 PSI	10

Part availability as of April 2024 but subject to prior sale. Part condition is new unless otherwise stated.

JOINT #CT-3009/101 ◆



Part Number	Description	Qty. In Stock
#CT-3009/101	JOINT, 1-16 X 8-1/16 X 9-1/16	10
#CT-3009/102	JOINT,	8



◆ **WASHER #CT-300A/2**

#CT-300A/2	WASHER, 31/32" OD X 1/32" THK	4
#CT-300A/27	WASHER, 1-7/8" OD X 1/8" THK	63
#CT-300A/28	WASHER, 1-7/8" OD X 1/4" THK	46
#CT-300B/23	WASHER, 2-13/16" OD X 1/4" THK	0
#CT-300F/6	WASHER, 7/8" OD X .109" THK	0
#CT-300J/2	WASHER, 1-1/4" OD X 1/8" THK	0

RTD #CT-3023A/2 ◆



#CT-3023A/1	RESISTANCE TEMP. DETECTOR	4
#CT-3023A/2	TEMPERATURE DETECTOR AIR INLET	2

Part availability as of April 2024 but subject to prior sale. Part condition is new unless otherwise stated.



◆ **LAGGING STRIP #CT-320C/1**

Part Number	Description	Qty. In Stock
#CT-320C/1	STRIP, LAGGING, 1ST ST. STATOR	2

O-RING #CT-336/10 ◆



#CT-336/10	O-RING, .275 X 7-5/8 X 8-1/8	3
------------	------------------------------	---



◆ **DISTANCE PIECE #CT-337/27**

#CT-337/27	DISTANCE PIECE, 3/4 X 1/8 LG	3
#CT-337/28	DISTANCE PIECE, 3/4 X .280 LG	8
#CT-337/7	DISTANCE PIECE, 1-1/4 X 7/16 L	3
#CT-337/82	DISTANCE PIECE, 9/16 X 1-11/32	0

SCREEN #CT-341B ◆



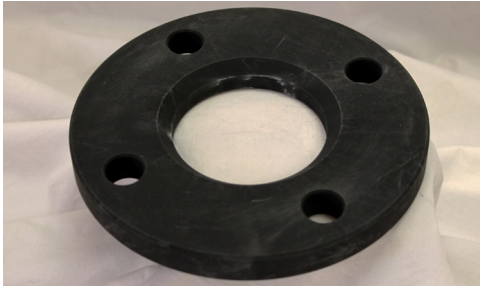
#CT-341B	SAFETY SCREEN	1
----------	---------------	---

Part availability as of April 2024 but subject to prior sale. Part condition is new unless otherwise stated.

ELBOW #CT-348B ◆



Part Number	Description	Qty. In Stock
#CT-348B	ELBOW, RESTRICTOR, 1/16"	4



◆ **FLANGE #CT-351D/1**

#CT-351D/1	FLANGE, 5/8 X 2.837 X 6-1/2	6
#CT-351D/12	FLANGE, 5/8 X 2.837 X 7-1/4	1
#CT-351D/21	FLANGE	1

SCREW #CT-355C/10 ◆



#CT-355C/10	SCREW, SCKT HD	22
-------------	----------------	----

Part availability as of April 2024 but subject to prior sale. Part condition is new unless otherwise stated.



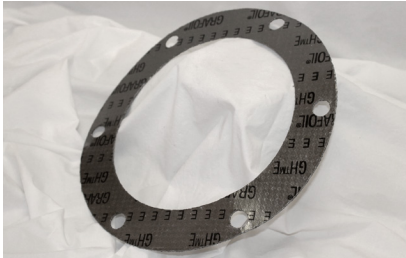
◆ VALVE #CT-356A

Part Number	Description	Qty. In Stock
#CT-356A	VALVE, SHUT OFF	1

ADAPTOR #CT-358A ◆



#CT-358A	ADAPTOR	9
----------	---------	---



◆ JOINT #CT-382/22

#CT-382/22	JOINT	1
#CT-382/23	JOINT,	5
#CT-382/49	JOINT, 1/16 X 1-1/2 X 2"	6
#CT-382/73	JOINT, 1/16 X 4-1/8 X 6-1/8	0
#CT-382/85	JOINT, 1/32 X 17/32 X 1	2
#CT-384/7	JOINT, OVAL, 1/16 X 3-3/8	0
#CT-386/10	JOINT, 1/32 X 3-3/16 X 5"	8
#CT-386/13	JOINT, 1/16 X 3-5/8 X 6"	1
#CT-386/5	JOINT, 1/32 X 2-13/16 X 3-15/16	3
#CT-388/1	JOINT, 1/16 X 4.906 X 5.563	0

Part availability as of April 2024 but subject to prior sale. Part condition is new unless otherwise stated.

BRACKET #CT-4001A ◆


Part Number	Description	Qty. In Stock
#CT-4001A	BRACKET, 3 WAY SOLENOID VALVE	1


◆ **WASHER #CT-4009**

#CT-4009	WASHER	3
----------	--------	---

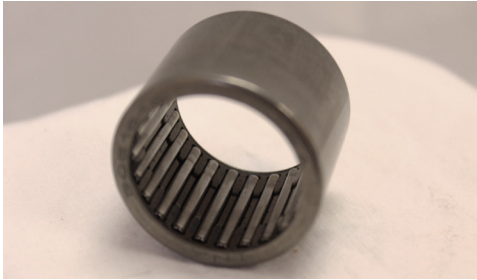
ADHESIVE #CT-4017A/1 ◆


#CT-4017A/1	ADHESIVE, CONTACT, TUBE	2
-------------	-------------------------	---


◆ **BEARING #CT-4017B/32**

#CT-4017B/32	BEARING, OIL LESS	0
--------------	-------------------	---

Part availability as of April 2024 but subject to prior sale. Part condition is new unless otherwise stated.



◆ BEARING SHAFT #CT-4017B/57

Part Number	Description	Qty. In Stock
#CT-4017B/57	BEARING, DRIVE SHAFT REAR	3

EXTRACTOR LAMP #CT-4017E/39 ◆



#CT-4017E/39	EXTRACTOR, LAMP	5
--------------	-----------------	---



◆ JOINT #CT-4017G/12

#CT-4017G/12	JOINT	43
#CT-4017G/13	JOINT, HOUSING COVER	2

Part availability as of April 2024 but subject to prior sale. Part condition is new unless otherwise stated.

MOD. #CT-4017K/110 ◆



Part Number	Description	Qty. In Stock
#CT-4017K/110	P2 AIR MOD.,SL/SHUT FUEL VALVE	2

◆ SPRING #CT-4017S/53

#CT-4017P/63	PAD THRUST SET	26
--------------	----------------	----

SEAL #CT-4017S/24 ◆



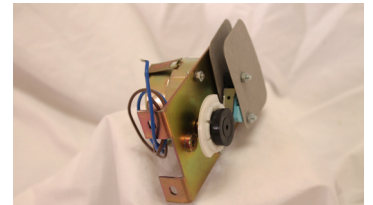
#CT-4017S/24	SEAL (PTFE/NYLON)	0
--------------	-------------------	---



◆ SPRING #CT-4017S/53

#CT-4017S/53	SPRING	93
#CT-4017S/66	SPRING, S.S.	6

TIMER #CT-4017T/55 ◆



#CT-4017T/55	TIMER	1
--------------	-------	---

Part availability as of April 2024 but subject to prior sale. Part condition is new unless otherwise stated.



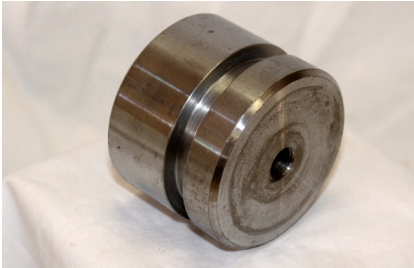
◆ **VANE #CT-4017V/5**

Part Number	Description	Qty. In Stock
#CT-4017V/5	VANE,(SET OF 5 VANES)	1

PUSHBUTTON #CT-4017X/2 ◆



#CT-4017X/2	GREEN PUSHBUTTON	9
-------------	------------------	---



◆ **GUIDE #CT-4020A**

#CT-4020A	GUIDE, SPRING	1
-----------	---------------	---

EXTRACTOR DOWEL #CT-4024A ◆

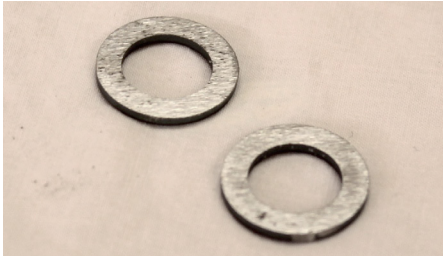


#CT-4024A	IMPACT DOWEL EXTRACTOR	1
-----------	------------------------	---

Part availability as of April 2024 but subject to prior sale. Part condition is new unless otherwise stated.

ADAPTOR #CT-4024A/4 ◆


Part Number	Description	Qty. In Stock
#CT-4024A/4	ADAPTOR, 2 BA DOWEL REMOVAL	1
#CT-4024A/6	ADAPTOR, 3/8 UNF DOWEL REMOVAL	2


◆ **WASHER #CT-411/45**

#CT-411/45	WASHER, 3/8"	4
#CT-411/46	WASHER, 1/16 X 17/64 X .435	67
#CT-411/49	WASHER, 3/16 X .645 X 1-3/8	38
#CT-411/50	WASHER, 1/8 X .395 X 7/8	129
#CT-411/53	WASHER, .188 X 21/64 X 9/16	1
#CT-411/55	WASHER, .092 X 41/64 X 1"	245
#CT-411/56	WASHER, 3/16 X 33/64 X 1"	207
#CT-411/58	WASHER, .1 X 1/2 X 11/16	1

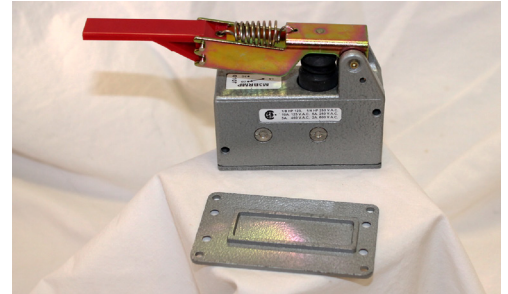
Part availability as of April 2024 but subject to prior sale. Part condition is new unless otherwise stated.



◆ **MANOMETER #CT-426/2**

Part Number	Description	Qty. In Stock
#CT-426/2	MANOMETER	14

MICROSWITCH #CT-436A ◆



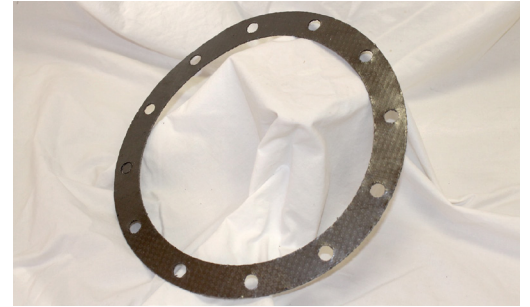
#CT-436A	MICROSWITCH GOV LIMIT TA	5
----------	--------------------------	---



◆ **MOUNTING PLATE #CT-436MP**

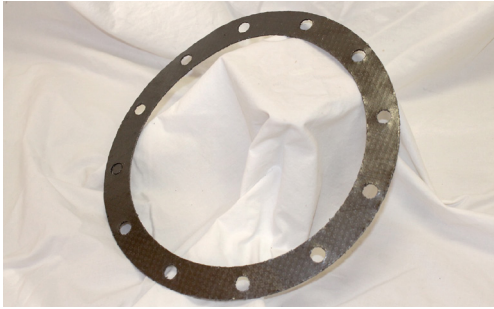
#CT-436MP	MOUNTING PLATE	3
-----------	----------------	---

Part availability as of April 2024 but subject to prior sale. Part condition is new unless otherwise stated.

JOINT #CT-450/11 ◆

Joint page A

Part Number	Description	Qty. In Stock
#CT-450/11	JOINT, 1/32 X 8" X 10"	3
#CT-450/120	JOINT, 1/16 X 7/8 X 1-1/4	8
#CT-450/129	JOINT, 1/16 X 6-1/8 X 7-3/8	3
#CT-450/130	JOINT, 1/32 X 2-13/16 X 4-5/16	1
#CT-450/131	JOINT, 1/32 X 2-1/4 X 4-1/16	1
#CT-450/132	JOINT, 1/32 X 2-1/4 X 4-5/16	0
#CT-450/133	JOINT, 1/32 X 2-1/4 X 5-1/16	1
#CT-450/136	JOINT, 1/32 X 8-3/16 X 9-5/16	6
#CT-450/138	JOINT, 1/32 X 2-1/8 X 3"	2
#CT-450/14	JOINT, 1/32 X 4-1/2 X 6-3/4	1
#CT-450/142	JOINT, 1/32 X 2-5/8 X 4-5/16	3
#CT-450/145	JOINT, 1/16 X 1-1/2 X 2"	1
#CT-450/159	JOINT, 1/32 X 2-5/8 X 4"	6
#CT-450/53	JOINT, 1/8 X 4-1/8 X 6-1/8	6
#CT-450/66	JOINT, 1/64 X 9-7/8 X 13-1/2	7
#CT-450/79	JOINT, 1/32 X 2" X 5-1/2	4
#CT-450/80	JOINT, .015 X 13" X 18"	2
#CT-450/81	JOINT, 1/16 X 13" X 18"	1
#CT-450/9	JOINT, 1/32 X 4-1/16 X 7"	1
#CT-450/90	JOINT, 1/32 X 1-1/2 X 2"	20

Part availability as of April 2024 but subject to prior sale. Part condition is new unless otherwise stated.



◆ **JOINT #CT-450/11**

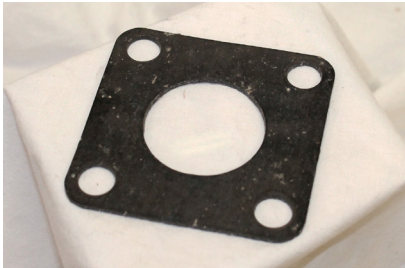
Joint page B

Part Number	Description	Qty. In Stock
#CT-450/96	JOINT, 1/16 X 1-7/16 X 1-7/8	3
#CT-450/98	JOINT, 1/32 X 1-15/16 X 2-15/16	8
#CT-450A/11	JOINT, 1/16 X 3-11/16 X 5-3/4	6
#CT-450A/12	JOINT, 1/16 X 1-15/16 X 2-15/16	0
#CT-450A/49	JOINT	0
#CT-450A/55	JOINT, 1/32 X 1-7/8 X 2-11/16	0
#CT-450A/67	JOINT, 1/32 X 11/16 X 2-9/16	6
#CT-450B/19	JOINT, 1/32 X 4-1/16 X 7"	9
#CT-450B/22	JOINT	0
#CT-450B/26	JOINT, 1/16 X 4-1/8 X 5-1/2	0
#CT-450B/27	JOINT, 1/8 X 4-1/8 X 6-1/8	2
#CT-450C/15	JOINT	0
#CT-450C/16	JOINT, 38 MM I/D	1
#CT-450C/17	JOINT, 437 MM I.D.	0
#CT-450C/8	JOINT	0
#CT-450D/1	JOINT, 1/16 X 4-1/8 X 6-1/8	0
#CT-453/6	JOINT, 1/8 X 8-3/8 X 9"	1
#CT-456/19	JOINT, 1/32 X 15/16 X 1-7/16	10
#CT-456/20	JOINT, 1/32 X 2-7/16 X 3-1/2	29
#CT-456/4	JOINT, 1/16 X 5-5/8 X 7-9/16	0

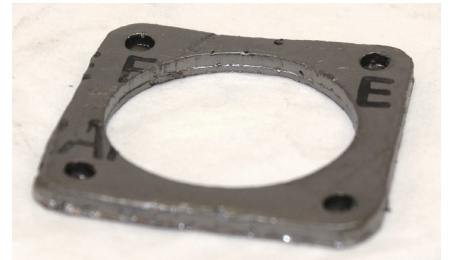
Part availability as of April 2024 but subject to prior sale. Part condition is new unless otherwise stated.

RING #CT-466/4 ◆


Part Number	Description	Qty. In Stock
#CT-466/4	RETAINING RING, .061 X 4.1"	53
#CT-466A/3	RETAINING RING, .050 X 1.42"	75

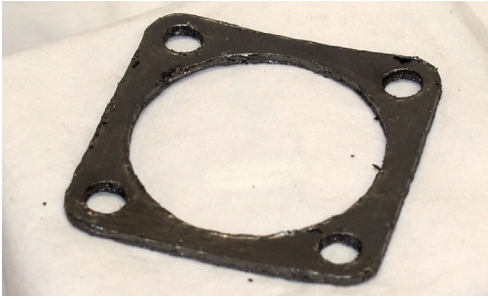

◆ **JOINT #CT-476/1**

#CT-476/1	JOINT	4
#CT-476/14	JOINT (GASKET)	7
#CT-476/22	GASKET	31

JOINT #CT-476/23 ◆


#CT-476/23	JOINT	4
#CT-476/33	JOINT	9
#CT-476/34	JOINT	6
#CT-476/4	JOINT	10
#CT-476A/4	JOINT	0
#CT-476A/5	JOINT, SQUARE 67MM ID	0
#CT-484/1	JOINT	6

Part availability as of April 2024 but subject to prior sale. Part condition is new unless otherwise stated.



◆ **GASKET #CT-484/2**

Part Number	Description	Qty. In Stock
#CT-484/2	GASKET	0
#CT-484/3	GASKET	10

JOINT #CT-484A/7 ◆



#CT-484A/7	SQUARE JOINT, 2-3/4 I/D	6
------------	-------------------------	---



◆ **JOINT #CT-501/2**

#CT-501/2	JOINT, OVAL, 2-5/8 X 4-3/8	1
#CT-501A/1	JOINT, OVAL, 1-1/2 X 2-5/16	0
#CT-501A/2	JOINT, OVAL, 1-3/4 X 2-5/8	1

Part availability as of April 2024 but subject to prior sale. Part condition is new unless otherwise stated.

STUD #CT-5021/2 ◆



Part Number	Description	Qty. In Stock
#CT-5021/2	BOLT, STUD	145
#CT-5021/3	STUD, 1/4UNF X 2-11/32	12



◆ **SHIM #CT-5084**

#CT-5084	SHIM, SET	9
----------	-----------	---

FITTING #CT-584A/1 ◆



#CT-584A/1	STUD, SPECIAL FITTING	1
------------	-----------------------	---



◆ **PIPE #CT-593/1**

#CT-593/1	PIPE, STAND	4
-----------	-------------	---

Part availability as of April 2024 but subject to prior sale. Part condition is new unless otherwise stated.



◆ **ADAPTOR #CT-593H/1**

Part Number	Description	Qty. In Stock
#CT-593H/1	ADAPTOR, 1/4 BSPF TO 1/4 BSPM	1

◆ **FLANGE #CT-606/13**



#CT-606/13	FLANGE, SQ., 11/16 X .89 X 4.5	6
------------	--------------------------------	---

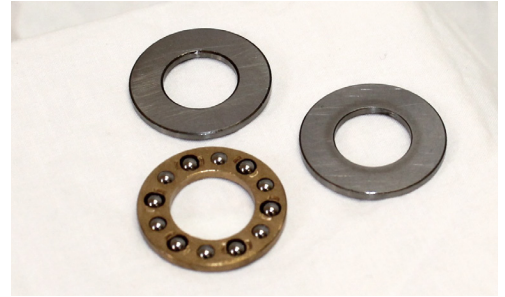


◆ **DOWEL #CT-645/161**

#CT-645/161	DOWEL, 5/16" X 3/4" LG	3
#CT-645/82	DOWEL, 3/16" X 7/8" LG	8
#CT-645A/121	DOWEL, 1/4" X 1-7/16" LG	8
#CT-645A/23	DOWEL, 3/32" X 3/8" LG	39
#CT-645A/26	DOWEL, 3/32" X 15/16" LG	13
#CT-645A/43	DOWEL, 1/8" X 1" LG	8
#CT-645B/5	DOWEL, 1/4" X 5/8" LG	0
#CT-645C/1	DOWEL, .0803 X AS RQRD.	62
#CT-645C/4	DOWEL, .0803" X .545" LG	2

Part availability as of April 2024 but subject to prior sale. Part condition is new unless otherwise stated.

BEARING #CT-648B/1 ◆



Part Number	Description	Qty. In Stock
#CT-648B/1	BEARING,	1
#CT-648D/1	BEARING, 7/32 X 1/4 X 3/4	7
#CT-648E/4	BEARING, 5/8 X 1.181 X 2.4405	0
#CT-648F/2	BEARING, 1.103 X 2.559 X 4.33	2
#CT-648G/1	BEARING, .28 X .375 X .8745	2
#CT-648J/1	BEARING, .807 X .669 X 1.024	1



◆ **JOINT #CT-650/96**

#CT-650/96	JOINT	10
------------	-------	----

PLUG #CT-655A ◆



#CT-655A	PLUG	1
----------	------	---

Part availability as of April 2024 but subject to prior sale. Part condition is new unless otherwise stated.



◆ **COUPLING #CT-659/3**

Part Number	Description	Qty. In Stock
#CT-659/3	COUPLING,(LOVEJOY)	1
#CT-659C/1	COUPLING DISC	11
#CT-659C/2	COUPLING DISC	2

NUT CAP #CT-736A/5 ◆



#CT-736A/5	NUT, CAP, 5/8-18	2
#CT-736A/7	NUT, CAP, 1/2-20	1



◆ **DISC SPRING #CT-758/2**

#CT-758/2	DISC SPRING, 3.5 X 30.5 X 60MM	1
-----------	--------------------------------	---

Part availability as of April 2024 but subject to prior sale. Part condition is new unless otherwise stated.

COUPLING #CT-759D/1 ◆



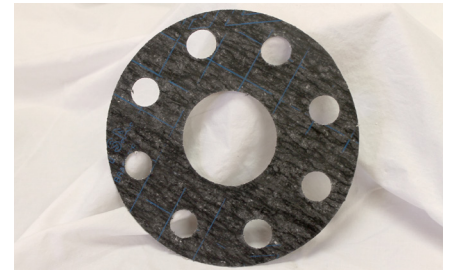
Part Number	Description	Qty. In Stock
#CT-759D/1	COUPLING, 3/4-16 TO 5/8 TU	2



◆ **ALLTHREAD #CT-764/5**

#CT-764/5	ALLTHREAD, 1/2-20 X 2-1/2	4
-----------	---------------------------	---

JOINT #CT-771B/11 ◆



#CT-771B/11	JOINT, 1/32 X 2-3/8 X 6-1/2	1
#CT-771B/12	JOINT, 1/32 X 3" X 7"	4
#CT-771B/13	JOINT, 1/32 X 3-1/2 X 7-1/2	4
#CT-771B/40	JOINT, 1/32 X 2-23/32 X 6-1/2	6
#CT-771B/9	JOINT, 1/32 X 1-5/16 X 4-1/4	3

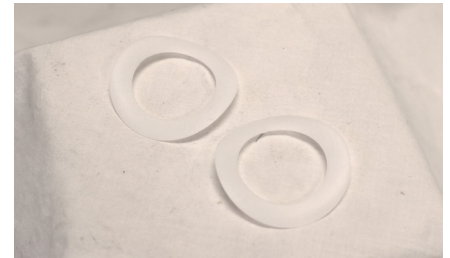
Part availability as of April 2024 but subject to prior sale. Part condition is new unless otherwise stated.



◆ **DOWEL #CT-774/11**

Part Number	Description	Qty. In Stock
#CT-774/11	DOWEL, KNURLED 1/2 X 1" LG	7
#CT-774/12	DOWEL, KNURLED 1/4 X 5/8 LG	12
#CT-774/9	DOWEL, KNURLED 1/2 X 1" LG	6

SHIM #CT-839X/9 ◆



#CT-839X/9	SHIM, .010 X 15/16 X 1-7/16	107
------------	-----------------------------	-----



◆ **PLUG #CT-856A/7**

#CT-856A/7	PLUG	1
------------	------	---

Part availability as of April 2024 but subject to prior sale. Part condition is new unless otherwise stated.

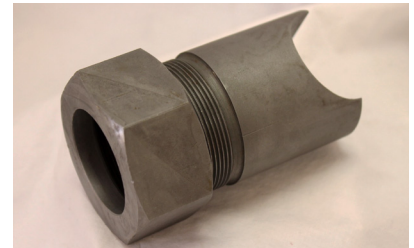
FLANGE #CT-862A/98 ◆


Part Number	Description	Qty. In Stock
-------------	-------------	---------------

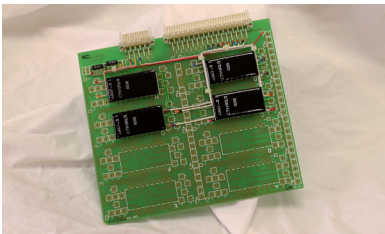
#CT-862A/98	FLANGE, 7/8 X 2.265 X 6-1/2	0
-------------	-----------------------------	---


◆ **COUPLING #CT-873B/1**

#CT-873B/1	COUPLING, ADAPTOR	8
------------	-------------------	---

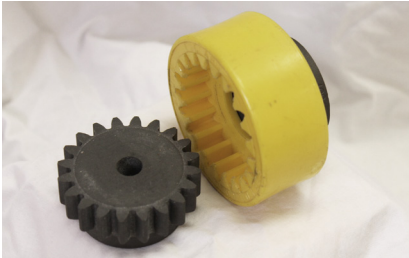
SADDLE BOSS #CT-894B/1 ◆


#CT-894B/1	BOSS, SADDLE, 1-1/2 TU X 3-1/4	2
#CT-894B/4	BOSS, SADDLE, 1-1/2 TU X 2-1/4	2


◆ **BOARD #CT-90167**

#CT-90167	BOARD, PRINTED CIRCUIT	1
-----------	------------------------	---

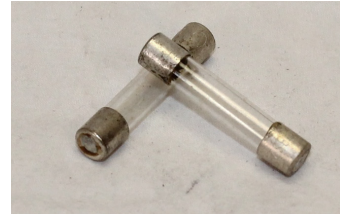
Part availability as of April 2024 but subject to prior sale. Part condition is new unless otherwise stated.



◆ **COUPLING #CT-903B/1**

Part Number	Description	Qty. In Stock
#CT-903B/1	COUPLING, .39 X 1.54 X 2.52	1
#CT-903C/104	COUPLING ELEMENT & BOLT SET	6
#CT-903C/105	COUPLING ELEMENT & BOLT SET	0
#CT-903E/001	COUPLING	0

FUSE #CT-91012/38 ◆



#CT-91012/38	FUSE, 100 MA	15
#CT-91012/56	FUSE - ANTI-SURGE - 20MM 100MA	3



◆ **CABLE #CT-91032/7**

#CT-91032/7	CABLE, ORANGE, SINGLE CORE	66
-------------	----------------------------	----

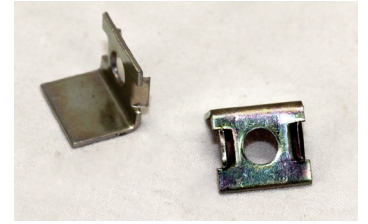
STUDS #CT-91039A/192 ◆



#CT-91039A/192	STUDS	2
----------------	-------	---

Part availability as of April 2024 but subject to prior sale. Part condition is new unless otherwise stated.

CLIP #CT-91167L ◆



Part Number	Description	Qty. In Stock
#CT-91167L	CLIP	116



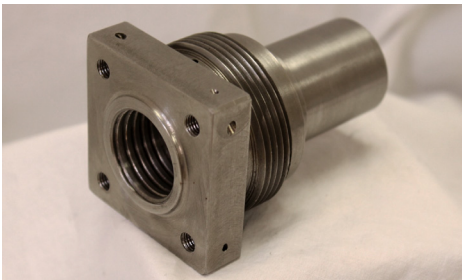
◆ **LAMP EXTRACTOR #CT-91206/33**

#CT-91206/33	EXTRACTOR,LAMP	1
--------------	----------------	---

SCREW #CT-91210/65 ◆



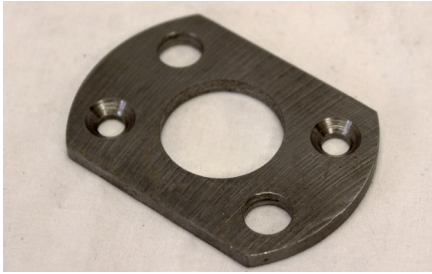
#CT-91210/65	SCREW, SPECIAL, M6 X 22	0
--------------	-------------------------	---



◆ **ADAPTOR #CT-916C**

#CT-916C	ADAPTOR, SIGHT WINDOW TUBE	1
#CT-926/1	ADAPTOR, 1-1/8 X 4-1/4	2
#CT-926/2	ADAPTOR, 1-1/8 X 4-5/8	2

Part availability as of April 2024 but subject to prior sale. Part condition is new unless otherwise stated.



◆ **PLATE #CT-934**

Part Number	Description	Qty. In Stock
#CT-934	PLATE, RETAINING	2

CABLE #CT-941A/5 ◆



#CT-941A/5	IGNITER CABLE, 6'-5"	0
#CT-941C/2	IGNITER CABLE, 9'-2"	0
#CT-941E/4	IGNITER CABLE, 35"	0



◆ **BUTTON #CT-941F/1**

#CT-941F/1	BUTTON, CONTACT (LONG)	21
------------	------------------------	----

Part availability as of April 2024 but subject to prior sale. Part condition is new unless otherwise stated.

KEY #CT-962/11 ◆



Part Number	Description	Qty. In Stock
#CT-962/11	KEY, PARALLEL	1



◆ **PIPE #CT-963/11**

#CT-963/11	PIPE, FLEXIBLE, 1" X 21-1/8"	3
#CT-963/22	PIPE, FLEXIBLE, 1/2" X 17-1/2"	1
#CT-963/83	PIPE, FLEXIBLE, 1" X 18"	1
#CT-963/84	PIPE, FLEXIBLE, 2-1/2 X 23-1/4	0
#CT-963/86	PIPE, FLEXIBLE, 1-1/2 X 17-7/8	1
#CT-963S/1	PIPE, FLEXIBLE, 2" X 25-5/8"	1

Part availability as of April 2024 but subject to prior sale. Part condition is new unless otherwise stated.



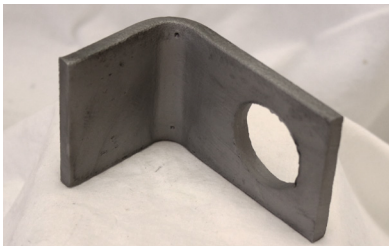
◆ SLEEVE #CT-980B/2

Part Number	Description	Qty. In Stock
#CT-980B/2	SLEEVE	1

FLANGE #CT-981/4 ◆



#CT-981/4	FLANGE, 1/2 X 2-3/4 X 5-1/4	1
#CT-981A/3	FLANGE, IRREGULAR SHAPE	1
#CT-981A/4	FLANGE, 11/16 X 3 X 4-1/2	0



◆ BRACKET #CT-993/13

#CT-993/13	BRACKET	3
------------	---------	---

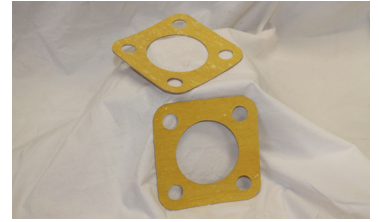
TAPE #FGT-012-0400 ◆



#FGT-012-0400	LAGGING TAPE, 4"	1
---------------	------------------	---

Part availability as of April 2024 but subject to prior sale. Part condition is new unless otherwise stated.

GASKET #PS-5350-60 ◆



Part Number	Description	Qty. In Stock
#PS-5350-60	GASKET, IN / OUT, CHGVR VALV	8



◆ **GASKET #PS-5350-61**

#PS-5350-61	GASKET, TOP / BOTTOM, CHGVRVLV	8
-------------	--------------------------------	---

GASKET #PS-5350-62 ◆



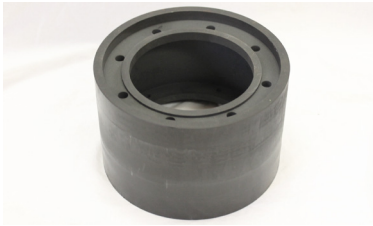
#PS-5350-62	GASKET, FILTER	6
-------------	----------------	---



◆ **COUPLING #PS-9060-02**

#PS-9060-02	COUPLING, NYLICON #2 TA 1750,	1
-------------	-------------------------------	---

Part availability as of April 2024 but subject to prior sale. Part condition is new unless otherwise stated.



◆ HOUSING #T66-07001

Part Number	Description	Qty. In Stock
#T66-07001	HOUSING	0

SPRING #T66-52004 ◆



#T66-52004	SPRING, TANDEM FUEL VALVE	5
------------	---------------------------	---



◆ SLEEVE #T66-52005

#T66-52005	SLEEVE, SPRING, LOCATING	2
------------	--------------------------	---

COUPLING #T71-52040 ◆



#T71-52040	COUPLING, FLEXIBLE SHAFT	4
------------	--------------------------	---

Part availability as of April 2024 but subject to prior sale. Part condition is new unless otherwise stated.

PLATE #T80-62044 ◆



Part Number	Description	Qty. In Stock
#T80-62044	PLATE, LOCKING	3



◆ **BALL GUIDE #TA-04241A**

#TA-04241A	BALL GUIDE	4
------------	------------	---

DRAIN CONNECTION #TA-05045A ◆



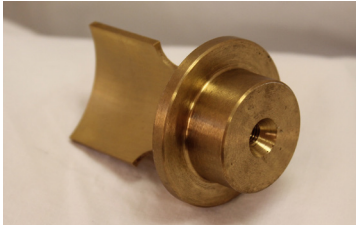
#TA-05045A	CONNECTION, DRAIN	1
------------	-------------------	---



◆ **COUPLING #TA-05053A**

#TA-05053A	COUPLING, SILENT BLOCK	11
#TA-05057C	COUPLING, LUBE OIL PUMP	2

Part availability as of April 2024 but subject to prior sale. Part condition is new unless otherwise stated.



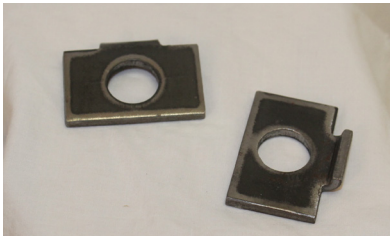
◆ VALVE #TA-05060/1

Part Number	Description	Qty. In Stock
#TA-05060/1	VALVE, BRASS	0
#TA-05050/2	VALVE SPRING HOUSING	0
#TA-05060/3	VALVE BODY	3
#TA-05060/4	VALVE SPRING	5

STRAINER #TA-05105 ◆



#TA-05105	STRAINER, LUB.OIL	0
-----------	-------------------	---



◆ PLATE #TA-05225

#TA-05225	PLATE, LOCKING	4
-----------	----------------	---

HOUSING #TA-07011B ◆



#TA-07011B	HOUSING, MOTOR SEAL	0
------------	---------------------	---

Part availability as of April 2024 but subject to prior sale. Part condition is new unless otherwise stated.

BRACKET #TA-07012C ◆



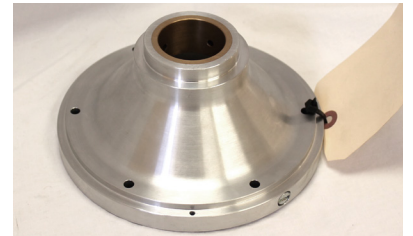
Part Number	Description	Qty. In Stock
#TA-07012C	BRACKET, MOTOR SUPPORT	0



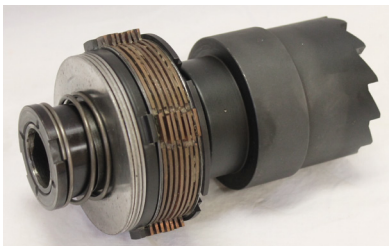
◆ **STARTER ASSEMBLY #TA-07104D/02**

#TA-07104D/02	GAS STARTER MOTOR ASSEMBLY	0
---------------	----------------------------	---

DE SHIELD #TA-07253/4 ◆



#TA-07253/4	ASSEMBLY, DE SHIELD	0
-------------	---------------------	---



◆ **CLUTCH #TA-08155/5**

#TA-08155/5	ASSY., CLUTCH & JAW, GAS START	0
-------------	--------------------------------	---

Part availability as of April 2024 but subject to prior sale. Part condition is new unless otherwise stated.



◆ **ADAPTOR #TA-08175**

Part Number	Description	Qty. In Stock
#TA-08175	JACKING ADAPTOR	10

RETAINER #TA-08507 ◆



#TA-08507	RETAINER (FOR GOVERNOR)	4
-----------	-------------------------	---



◆ **BOLT #TA-10011B**

#TA-10011B	BOLT, SPECIAL FAIRING	9
------------	-----------------------	---

PLUG #TA-10012 ◆



#TA-10012	PLUG, ADJUSTING	6
-----------	-----------------	---

Part availability as of April 2024 but subject to prior sale. Part condition is new unless otherwise stated.

COUPLING #TA-10021 ◆



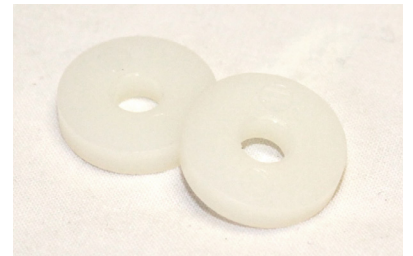
#TA-10021	SPECIAL COUPLING	2
-----------	------------------	---



◆ **PIN #TA-10024A**

#TA-10024A	SOCKET PIN, BRASS	10
------------	-------------------	----

WASHERS #TA-10025 ◆



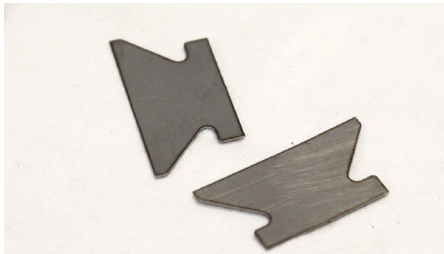
#TA-10025	WASHERS, INSULATING	264
-----------	---------------------	-----



◆ **SLEEVES #TA-10026**

#TA-10026	SLEEVES, INSULATING	37
-----------	---------------------	----

Part availability as of April 2024 but subject to prior sale. Part condition is new unless otherwise stated.



◆ SHIM #TA-11005A/1

Part Number	Description	Qty. In Stock
#TA-11005A/1	SHIM, 0.010" THICK	91
#TA-11005A/2	SHIM, 0.015" THICK	38

BOLT #TA-11013 ◆



#TA-11013	BOLT, COMPRESSOR ROTOR TA	1
-----------	---------------------------	---



◆ COUPLING #TA-11021A

#TA-11021A	COUPLING, CLAW FLEX DRIVEN HALF	0
------------	---------------------------------	---

NUT #TA-11022/1 ◆



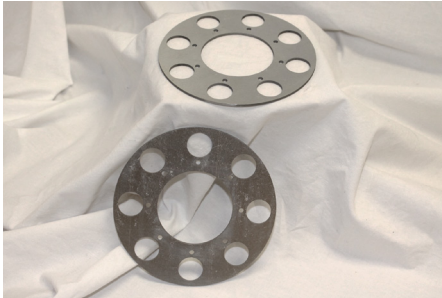
#TA-11022/1	RING NUT	1
-------------	----------	---

Part availability as of April 2024 but subject to prior sale. Part condition is new unless otherwise stated.

BOLTS #TA-11025A ◆



Part Number	Description	Qty. In Stock
#TA-11025A	BOLTS, FITTING	10



◆ **SHIM #TA-11026C/1**

#TA-11026C/1	SHIM, 33 X 0.002 LAMINATIONS	0
#TA-11026C/2	SHIM, SOLID	1
#TA-11026C/3	SHIM, 18 X 0.002" LAMINATIONS	2

SLEEVES #TA-11033A ◆



#TA-11033A	SLEEVES	2
------------	---------	---

Part availability as of April 2024 but subject to prior sale. Part condition is new unless otherwise stated.



◆ **BOLT #TA-11034A**

Part Number	Description	Qty. In Stock
#TA-11034A	BOLT	12
#TA-11060B	BOLT, FITTING, ASSEMBLY	3

SHIM #TA-12014/1 ◆



#TA-12014/1	SHIM, 0.125" THICKNESS	6
#TA-12014/2	SHIM, 0.010 THICKNESS	107
#TA-12014A/1	SHIM SET, 0.125 THICKNESS	13
#TA-12014A/2	SHIM SET, 0.010 THICKNESS	0



◆ **SEAL COMPRESSOR #TA-12015**

#TA-12015	SEAL COMPRESSOR INLET	1
-----------	-----------------------	---

Part availability as of April 2024 but subject to prior sale. Part condition is new unless otherwise stated.

HOUSING #TA-12016A ◆

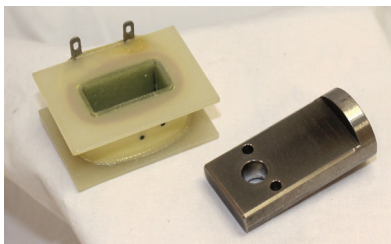

Part Number	Description	Qty. In Stock
#TA-12016A	BEARING HOUSING, INLET, TOP	4
#TA-12017	BEARING HOUSING, INLET, BOTTOM	4


◆ **LINER #TA-12018**

#TA-12018	LINER, HALF, .075" THK.	10
-----------	-------------------------	----

SHIM #TA-12019 ◆


#TA-12019	SHIM, HALF, .01" THK.	55
#TA-12022	SHIM, HALF, .005" THK.	112


◆ **TACHO #TA-12024**

#TA-12024	ASSY., TACHO PICK UP	2
-----------	----------------------	---

Part availability as of April 2024 but subject to prior sale. Part condition is new unless otherwise stated.



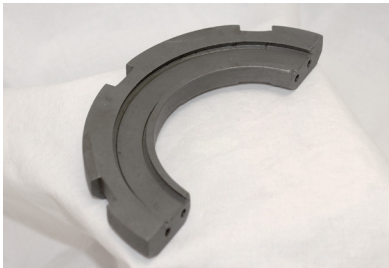
◆ **PLATE #TA-12027**

Part Number	Description	Qty. In Stock
#TA-12027	PLATE, RETAINING	3

BEARING #TA-12028 ◆



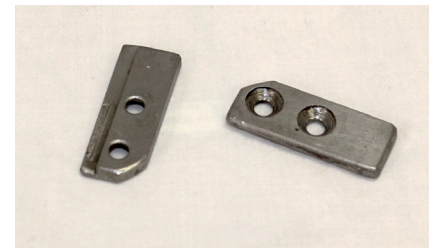
#TA-12028	BEARING, THRUST	2
-----------	-----------------	---



◆ **RING #TA-12028/1**

#TA-12028/1	RING, HALF RETAINING	5
-------------	----------------------	---

PAD STOP #TA-12028/5 ◆



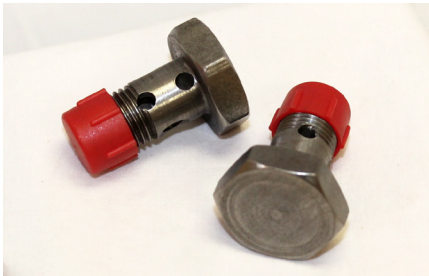
#TA-12028/5	PAD STOP	20
-------------	----------	----

Part availability as of April 2024 but subject to prior sale. Part condition is new unless otherwise stated.

PIPE #TA-12047A/1 ◆



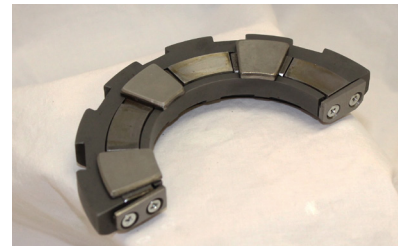
Part Number	Description	Qty. In Stock
#TA-12047A/1	PIPE, CONNECTOR	4



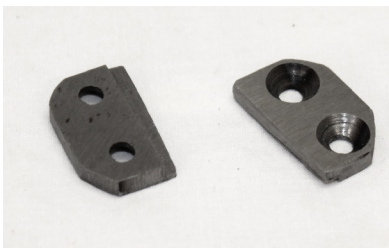
◆ BANJO STUD #TA-12048

#TA-12048	BANJO STUD, MODIFIED	2
-----------	----------------------	---

BEARING #TA-12049A ◆



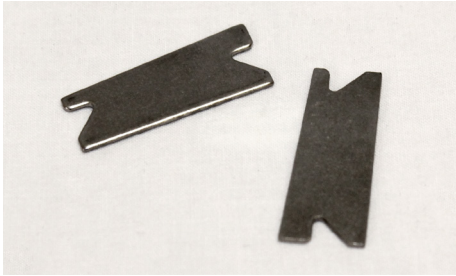
#TA-12049A	BEARING, THRUST	1
------------	-----------------	---



◆ PAD STOP #TA-12049A/4

#TA-12049A/4	STOP, THRUST PAD	4
--------------	------------------	---

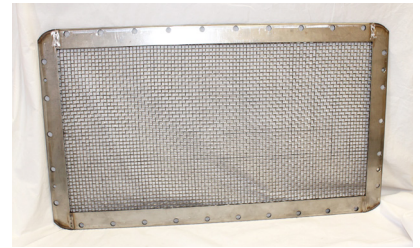
Part availability as of April 2024 but subject to prior sale. Part condition is new unless otherwise stated.



◆ SHIM #TA-13003/2

Part Number	Description	Qty. In Stock
#TA-13003/2	SHIM	0
#TA-13003A	SHIM	12
#TA-13004A	SHIM, EXIT STAGE	0

SCREEN #TA-14013B ◆



#TA-14013B	SCREEN, INLET	1
------------	---------------	---



◆ TOP PLATE #TA-21203B/2

#TA-21203B/2	TOP PLATE, DUAL FUEL BELLOWS	3
--------------	------------------------------	---

BOSS #TA-21214A/3 ◆



#TA-21214A/3	BOSS, FLAME TUBE LOCATING	7
--------------	---------------------------	---

Part availability as of April 2024 but subject to prior sale. Part condition is new unless otherwise stated.

PEG #TA-21238E ◆



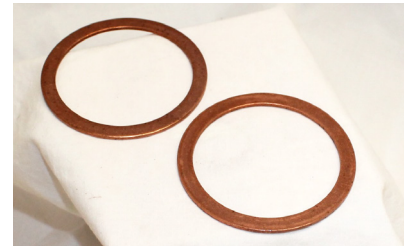
Part Number	Description	Qty. In Stock
#TA-21238E	PEG LOCATING	3



◆ **JOINT #TA-21239**

#TA-21239	JOINT, LOCATING PEG	62
-----------	---------------------	----

GASKET #TA-21252 ◆



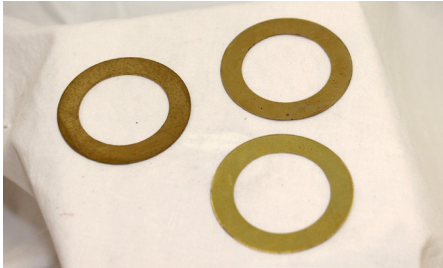
#TA-21252	GASKET, COPPER	267
-----------	----------------	-----



◆ **WASHER #TA-21262**

#TA-21262	WASHER, BRASS	0
-----------	---------------	---

Part availability as of April 2024 but subject to prior sale. Part condition is new unless otherwise stated.



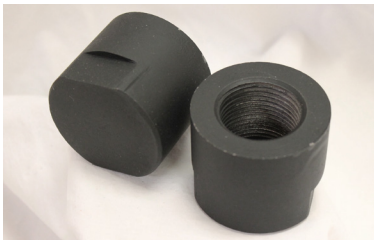
◆ SHIM #TA-21262A

Part Number	Description	Qty. In Stock
#TA-21262A	SHIM SET 005-010-025	0
#TA-21262A/2	SHIM, 0.010"	75
#TA-21262A/3	SHIM, 0.025"	74

CAP #TA-21276 ◆



#TA-21276	THERMOCOUPLE CAP NUT	2
-----------	----------------------	---



◆ CAP #TA-21283

#TA-21283	CAP NUT	6
-----------	---------	---

WASHER #TA-21286 ◆



#TA-21286	WASHER	17
-----------	--------	----

Part availability as of April 2024 but subject to prior sale. Part condition is new unless otherwise stated.

BOLT #TA-21287 ◆



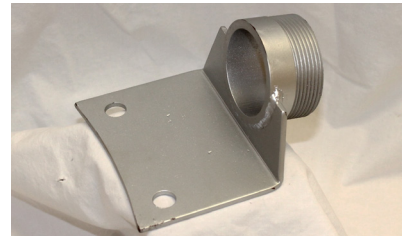
Part Number	Description	Qty. In Stock
#TA-21287	BOLT, SPECIAL	24



◆ **VANE #TA-21291**

#TA-21291	STRIP VANE	8
-----------	------------	---

BRACKET #TA-21587C ◆



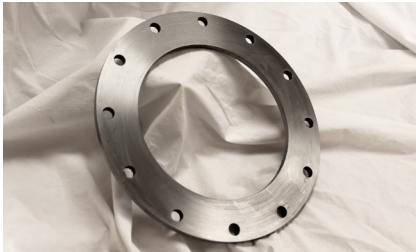
#TA-21587C	BRACKET	0
------------	---------	---



◆ **LOCKING RING #TA-21598A**

#TA-21598A	LOCKING RING, DUAL FUEL	2
------------	-------------------------	---

Part availability as of April 2024 but subject to prior sale. Part condition is new unless otherwise stated.



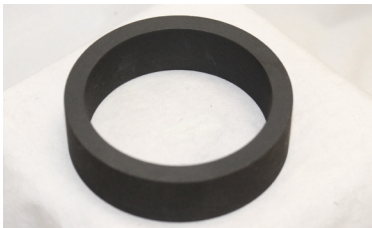
◆ **PLATE #TA-21634B**

Part Number	Description	Qty. In Stock
#TA-21634B	PLATE, RETAINING	1

NUT #TA-21636 ◆



#TA-21636	SAFETY DIAPHRAGM, DUAL FUEL	20
-----------	-----------------------------	----



◆ **SPACER #TA-21647**

#TA-21647	SPACER	1
-----------	--------	---

LOCKNUT #TA-22046 ◆



#TA-22046	BURNER LOCKNUT	4
-----------	----------------	---

Part availability as of April 2024 but subject to prior sale. Part condition is new unless otherwise stated.

ORIFICE #TA-22049D ◆



Part Number	Description	Qty. In Stock
#TA-22049D	ORIFICE PLATE	32



◆ **WASHER #TA-23114**

#TA-23114	WASHER, BRASS, ORIFICE PLATE	526
-----------	------------------------------	-----

BRACKET #TA-23118H ◆



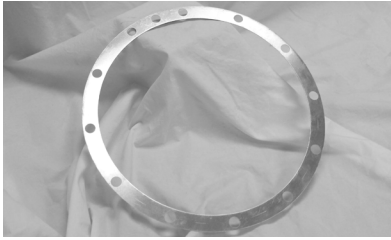
#TA-23118H	BRACKET	2
------------	---------	---



◆ **ADAPTOR #TA-23121A**

#TA-23121A	ADAPTOR	1
#TA-23121B	ADAPTOR, 1/4BSP TO 1/2BSPLH	3

Part availability as of April 2024 but subject to prior sale. Part condition is new unless otherwise stated.



◆ SHIM #TA-30011

Part Number	Description	Qty. In Stock
#TA-30011	SHIM, LAMINATED	1
#TA-30012	SHIM, LAMINATED	8

FIXING STRAP #TA-30014 ◆



#TA-30014	FIXING STRAP	21
-----------	--------------	----



◆ SHIM #TA-30039/1

#TA-30039/1	SHIM,RGT,1/8"THK,ADJ.VOLUTE	9
#TA-30039/2	SHIM, 1/32" IN STEEL	12

BOLT #TA-30612B ◆



#TA-30612B	BOLT, TAPER FITTING	5
------------	---------------------	---

Part availability as of April 2024 but subject to prior sale. Part condition is new unless otherwise stated.

WASHER #TA-31014 ◆



Part Number	Description	Qty. In Stock
#TA-31014	WASHER, ROTOR LOCKING	3



◆ **NUT #TA-31015A**

#TA-31015A	NUT, WITHDRAWING	5
------------	------------------	---

DOWEL #TA-31016B ◆



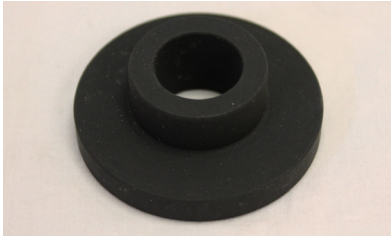
#TA-31016B	DOWEL, C.T. ROTOR	11
------------	-------------------	----



◆ **KEY #TA-31018**

#TA-31018	KEY, GIB HEAD	0
-----------	---------------	---

Part availability as of April 2024 but subject to prior sale. Part condition is new unless otherwise stated.



◆ SHIM #TA-31022B

Part Number	Description	Qty. In Stock
#TA-31022B	SHIM, CLAW COUPLING (INNER)	0

BOLT #TA-31027 ◆



#TA-31027	BOLT, FITTING	6
#TA-31029	BOLT, SPECIAL FITTING	0



◆ RING #TA-31034/1

#TA-31034/1	RING, INNER THRUST	0
-------------	--------------------	---

SEAL #TA-32017 ◆



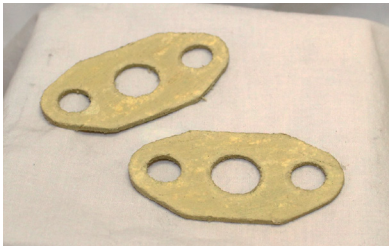
#TA-32017	SEAL, LABYRINTH	17
-----------	-----------------	----

Part availability as of April 2024 but subject to prior sale. Part condition is new unless otherwise stated.

SHIM #TA-32018 ◆



Part Number	Description	Qty. In Stock
#TA-32018	SHIM, LAMINATED	7
#TA-32018/2	SHIM, SOLID ALUMINIUM	5
#TA-32618A/3	SHIM, PT BEARING HOUSING .100	3
#TA-32618A/4	SHIM, PT BEARING HOUSING .110	5
#TA-32618A/6	SHIM, PT BEARING HOUSING .130	10
#TA-32618A/7	SHIM, PT BEARING HOUSING .140	5
#TA-32618A/9	SHIM, PT BEARING HOUSING .160	3



◆ **JOINT #TA-32624**

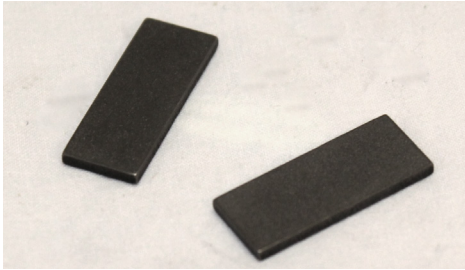
#TA-32624	JOINT	7
-----------	-------	---

BEARING #TA-32625 ◆



#TA-32625	BEARING, THRUST	4
-----------	-----------------	---

Part availability as of April 2024 but subject to prior sale. Part condition is new unless otherwise stated.



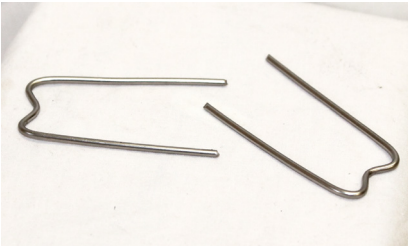
◆ STRIPS #TA-33012C

Part Number	Description	Qty. In Stock
#TA-33012C	SEALING STRIPS	0

LAGGING BOX #TA-33013A ◆



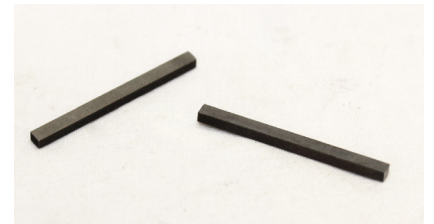
#TA-33013A	LAGGING BOX	4
------------	-------------	---



◆ STAPLES #TA-33019

#TA-33019	STAPLES	35
-----------	---------	----

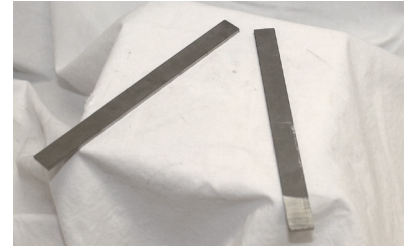
SEALING STRIP #TA-33023A ◆



#TA-33023A	SEALING STRIP	10
------------	---------------	----

Part availability as of April 2024 but subject to prior sale. Part condition is new unless otherwise stated.

SEALING STRIP #TA-33612A ◆



Part Number	Description	Qty. In Stock
#TA-33612A	STRIP, SEALING	15



◆ **NUT #TA-33615**

#TA-33615	NUT, 5/8 UNF	4
-----------	--------------	---

CT VOLUTE INNER MEMBER #TA-34018 ◆



#TA-34018	CT VOLUTE INNER MEMBER	8
-----------	------------------------	---



◆ **BOLT #TA-34021B**

#TA-34021B	BOLT, RETAINING	13
------------	-----------------	----

Part availability as of April 2024 but subject to prior sale. Part condition is new unless otherwise stated.



◆ NUT #TA-34022

Part Number	Description	Qty. In Stock
#TA-34022	LOCK NUT, 1/4 UNF	78
#TA-34042A	NUT, SLOTTED	3

RING #TA-35014C ◆



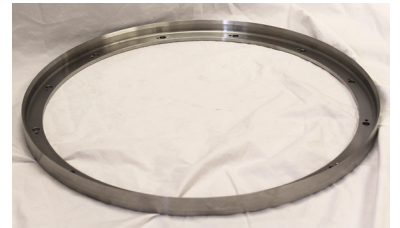
#TA-35014C	RING, INSULATION	17
#TA-35015	RING, SEALING	10



◆ DOWEL #TA-35018

#TA-35018	DOWEL	7
-----------	-------	---

RING #TA-35019A ◆



#TA-35019A	SHROUD RING, AXIAL HOLE	4
#TA-35019B	SHROUD RING, RADIAL HOLE	2

Part availability as of April 2024 but subject to prior sale. Part condition is new unless otherwise stated.

PLATE #TA-35021B ◆



Part Number	Description	Qty. In Stock
#TA-35021B	PLATE, THRUST	1



◆ **SHIM #TA-35025A/1**

#TA-35025A/1	SHIM 32 SWG	3
#TA-35025A/2	SHIM, 20 SWG	4

DOWEL #TA-35038 ◆



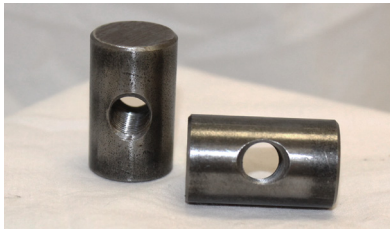
#TA-35038	DOWEL	27
-----------	-------	----



◆ **SCREW #TA-35621**

#TA-35621	SCREW, SEALING CLIP ADJUSTING	1
-----------	-------------------------------	---

Part availability as of April 2024 but subject to prior sale. Part condition is new unless otherwise stated.



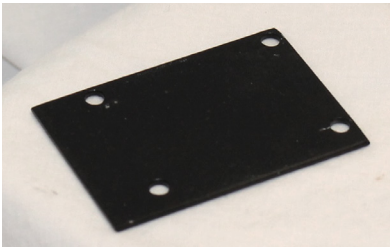
◆ PEG #TA-35622

Part Number	Description	Qty. In Stock
#TA-35622	CLIP,SEALING TAPPED PEG	4

PEG #TA-35623 ◆



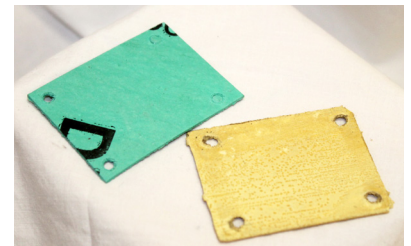
#TA-35623	PEG, PLAIN	0
-----------	------------	---



◆ COVER #TA-51001

#TA-51001	COVER	12
#TA-51002	COVER PLATE	11

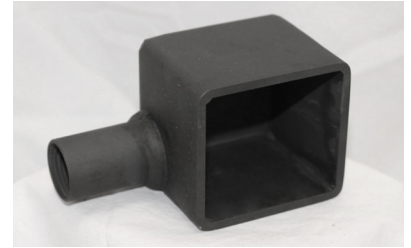
JOINT #TA-51004 ◆



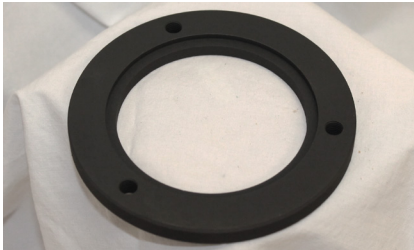
#TA-51004	JOINT	10
#TA-51005	JOINT	3

Part availability as of April 2024 but subject to prior sale. Part condition is new unless otherwise stated.

COVER #TA-51006A ◆



Part Number	Description	Qty. In Stock
#TA-51006A	COVER, MICRO SWITCH	3



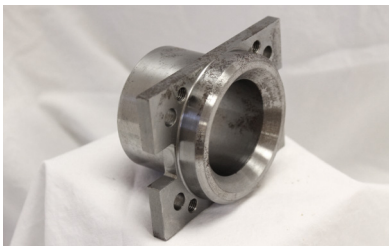
◆ **PLATE #TA-51009**

#TA-51009	PLATE, BEARING RETAINING	4
-----------	--------------------------	---

COVER #TA-51011-50 ◆



#TA-51011-50	COVER PLATE, FRONT CASTING	4
--------------	----------------------------	---



◆ **BEARING #TA-51016**

#TA-51016	BEARING, OUTRIGGER	11
-----------	--------------------	----

Part availability as of April 2024 but subject to prior sale. Part condition is new unless otherwise stated.



◆ LINK #TA-51017

Part Number	Description	Qty. In Stock
#TA-51017	LINK, WEIGHT	14

BOLT #TA-51019 ◆



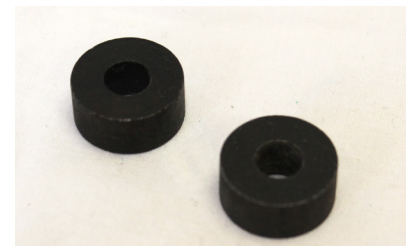
#TA-51019	BOLT, GOV. FLYWEIGHT	50
-----------	----------------------	----



◆ WASHER #TA-51021

#TA-51021	WASHER, DISTANCE	47
-----------	------------------	----

DISTANCE PIECE #TA-51022 ◆



#TA-51022	PIECE, DISTANCE	153
-----------	-----------------	-----

Part availability as of April 2024 but subject to prior sale. Part condition is new unless otherwise stated.

PLUG #TA-51024 ◆



Part Number	Description	Qty. In Stock
#TA-51024	PLUG, ADJUSTMENT	25



◆ **PILOT VALVE #TA-51026A**

#TA-51026A	PILOT VALVE	1
------------	-------------	---

FILTER #TA-51030 ◆



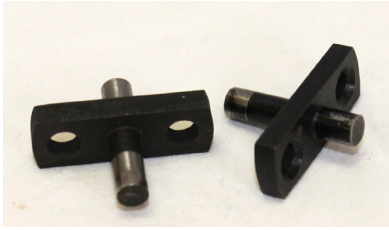
#TA-51030	ASSY. OIL FILTER	3
-----------	------------------	---



◆ **SCREW #TA-51038**

#TA-51038	SCREW, FLATHEAD SOCKET 1L4	1
-----------	----------------------------	---

Part availability as of April 2024 but subject to prior sale. Part condition is new unless otherwise stated.



◆ PIN #TA-51041

Part Number	Description	Qty. In Stock
#TA-51041	PIN MICRO SWITCH OPERATOR	5

HOUSING #TA-51042C ◆



#TA-51042C	HOUSING, BEARING	8
------------	------------------	---



◆ RING #TA-51043

#TA-51043	RING, THRUST (FOR GOVERNOR)	7
-----------	-----------------------------	---

SPRING #TA-51044 ◆



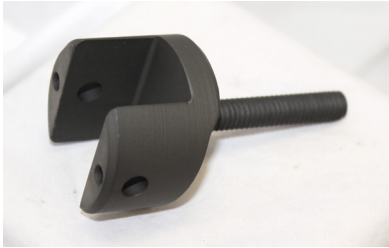
#TA-51044	SPRING, SPEEDER	19
-----------	-----------------	----

Part availability as of April 2024 but subject to prior sale. Part condition is new unless otherwise stated.

◆ **GEAR #TA-51045C**



Part Number	Description	Qty. In Stock
#TA-51045C	GEAR, ADJUSTMENT	2



CARRIER #TA-51047 ◆

#TA-51047	CARRIER, DROOP LEVER	7
-----------	----------------------	---

◆ **PIN #TA-51048**



#TA-51048	PIVOT PIN	5
-----------	-----------	---



LEVER #TA-51049 ◆

#TA-51049	DROOP LEVER	2
-----------	-------------	---

Part availability as of April 2024 but subject to prior sale. Part condition is new unless otherwise stated.



◆ **BLOCK #TA-51052**

Part Number	Description	Qty. In Stock
#TA-51052	BLOCK, FULCRUM	1

PIECE #TA-51057 ◆



#TA-51057	PIECE, DISTANCE	22
-----------	-----------------	----



◆ **LEVER #TA-51059**

#TA-51059	LEVER, SPEED INDICATOR	7
-----------	------------------------	---

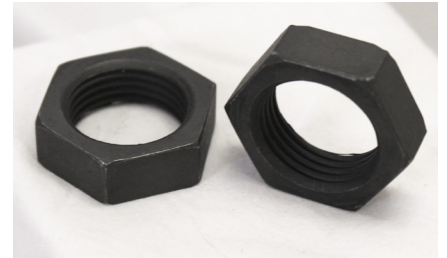
WASHER #TA-51069A ◆



#TA-51069A	WASHER	4
------------	--------	---

Part availability as of April 2024 but subject to prior sale. Part condition is new unless otherwise stated.

NUT #TA-51077 ◆



Part Number	Description	Qty. In Stock
#TA-51077	RETAINING NUT	6



◆ **PLATE #TA-51079**

#TA-51079	PLATE, COVER (STORAGE PURPOSES)	9
-----------	---------------------------------	---

SLEEVE #TA-51084 ◆



#TA-51084	SLEEVE, OPERATING ROD	1
-----------	-----------------------	---



◆ **SPRING #TA-51085**

#TA-51085	SPRING, RETURN	7
-----------	----------------	---

Part availability as of April 2024 but subject to prior sale. Part condition is new unless otherwise stated.



◆ **RESTRICTOR #TA-51087A**

Part Number	Description	Qty. In Stock
#TA-51087A	RESTRICTOR	3

LEVER #TA-51088 ◆



#TA-51088	ROCKER LEVER	2
-----------	--------------	---



◆ **SHAFT #TA-51089**

#TA-51089	ROCKER SHAFT	4
-----------	--------------	---

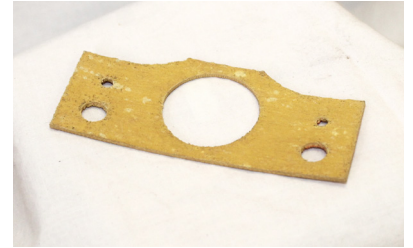
SPRING #TA-51092 ◆



#TA-51092	SPRING, TORSION	0
-----------	-----------------	---

Part availability as of April 2024 but subject to prior sale. Part condition is new unless otherwise stated.

JOINT #TA-51102 ◆



Part Number	Description	Qty. In Stock
#TA-51102	JOINT	2
#TA-51102B	JOINT, BLANKING PLATE	19



◆ **SLEEVE #TA-51121**

#TA-51121	SLEEVE	33
-----------	--------	----

MICROSWITCH #TA-51122 ◆



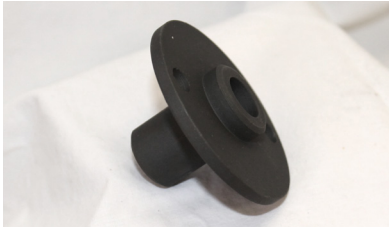
#TA-51122	MICROSWITCH, GOVERNOR	0
-----------	-----------------------	---



◆ **GASKET #TA-51125A**

#TA-51125A	GASKET	1
#TA-51126A	GASKET	6

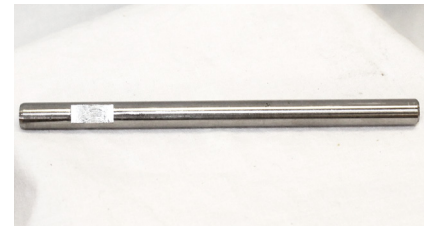
Part availability as of April 2024 but subject to prior sale. Part condition is new unless otherwise stated.



◆ SEAL #TA-51128

Part Number	Description	Qty. In Stock
#TA-51128	RETAINER, SEAL	0

SPINDLE #TA-51149 ◆



#TA-51149	SPINDLE	8
-----------	---------	---



◆ SPRING #TA-51151

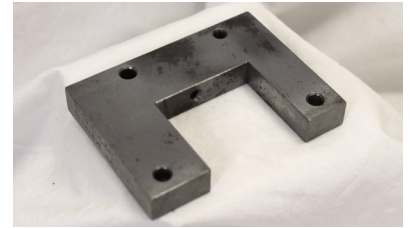
#TA-51151	SPRING, TENSION, TA GOVERNOR	4
-----------	------------------------------	---

DISTANCE PIECE #TA-51156 ◆



#TA-51156	DISTANCE PIECE	3
-----------	----------------	---

Part availability as of April 2024 but subject to prior sale. Part condition is new unless otherwise stated.

PLATE #TA-51158A ◆


Part Number	Description	Qty. In Stock
#TA-51158A	PLATE, MICROSWITCH MOUNTING	2


◆ **BOSS #TA-51159**

#TA-51159	BOSS	8
#TA-51159A	BOSS	9

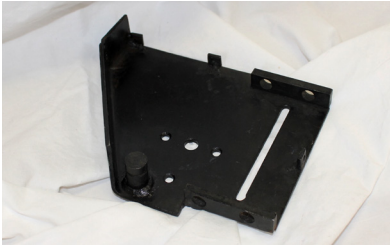
ROD #TA-51162A ◆


#TA-51162A	ROD, ADJUSTMENT, UPPER	2
------------	------------------------	---


◆ **LEVER #TA-51164A**

#TA-51164A	LEVER, MICROSWITCH	2
------------	--------------------	---

Part availability as of April 2024 but subject to prior sale. Part condition is new unless otherwise stated.



◆ **BRACKET #TA-51165**

Part Number	Description	Qty. In Stock
#TA-51165	BRACKET	4

PLATE, END #TA-51175 ◆



#TA-51175	PLATE, END	1
-----------	------------	---



◆ **LOCKNUT #TA-52001**

#TA-52001	LOCKNUT	3
-----------	---------	---

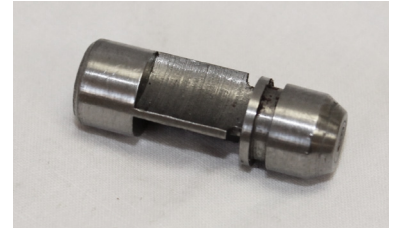
VALVE, TANDEM GOV. FUEL #TA-52002Z ◆



#TA-52002Z	VALVE, TANDEM GOV. FUEL	10
------------	-------------------------	----

Part availability as of April 2024 but subject to prior sale. Part condition is new unless otherwise stated.

VALVE #TA-52022G ◆



Part Number	Description	Qty. In Stock
#TA-52022G	VALVE	1



◆ **HANDLE #TA-55023**

#TA-55023	HANDLE CONTROL	0
-----------	----------------	---

GUIDE #TA-52023G ◆



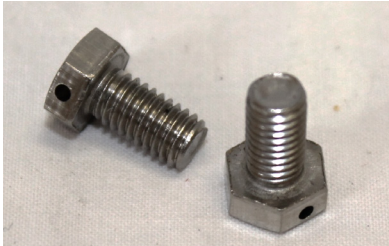
#TA-52023G	GUIDE	5
------------	-------	---



◆ **SEAL #TA-52033**

#TA-52033	SEPARATOR,SEAL	2
-----------	----------------	---

Part availability as of April 2024 but subject to prior sale. Part condition is new unless otherwise stated.



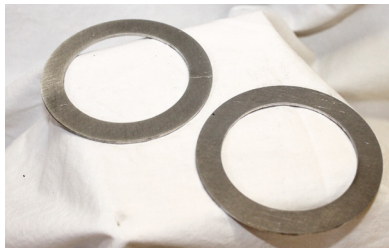
◆ SCREW #TA-52045

Part Number	Description	Qty. In Stock
#TA-52045	SCREW, HEX, 10-32 X 3/8"	4

JOINT #TA-52054C ◆



#TA-52054C	JOINT	4
------------	-------	---



◆ SHIM #TA-52055A/1

#TA-52055A/1	SHIM, 1/16"	10
#TA-52055A/2	SHIM, 1/32"	10
#TA-52055A/3	SHIM, 1/64"	8

SPRING KEEPER #TA-52094A ◆



#TA-52094A	SPRING KEEPER	1
------------	---------------	---

Part availability as of April 2024 but subject to prior sale. Part condition is new unless otherwise stated.

BUSH #TA-52096 ◆



Part Number	Description	Qty. In Stock
#TA-52096	BUSH	3



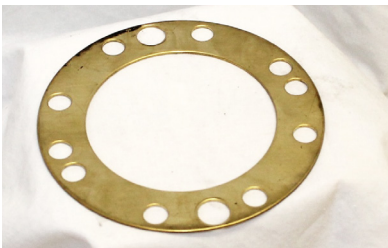
◆ **SCREW #TA-52097**

#TA-52097	SCREW, ADJUSTING	1
-----------	------------------	---

SPINDLE #TA-52098A ◆



#TA-52098A	SPINDLE, GAS VALVE	2
------------	--------------------	---



◆ **SHIM #TA-52121C/1**

#TA-52121C/1	SHIM 20SWG	3
#TA-52121C/2	SHIM 30SWG	3
#TA-52121C/3	SHIM 36 SWG	2

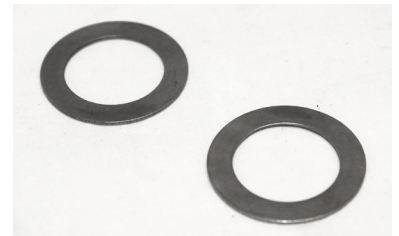
Part availability as of April 2024 but subject to prior sale. Part condition is new unless otherwise stated.



◆ **CARRIER #TA-52125**

Part Number	Description	Qty. In Stock
#TA-52125	CARRIER, SPRING, FUEL VALVE	1

SPACER #TA-52136A/1 ◆



#TA-52136A/1	SPACER, 1/32"	8
#TA-52136A/2	SPACER, 1/16"	8



◆ **SHIM #TA-52249/2**

#TA-52249/2	SHIM 3/64 IN	2
#TA-52249/3	SHIM, 1/32"	36
#TA-52249/4	SHIM, 1/64"	43

BUSH #TA-54014A ◆



#TA-54014A	BUSH	5
------------	------	---

Part availability as of April 2024 but subject to prior sale. Part condition is new unless otherwise stated.

BOLT #TA-54019 ◆



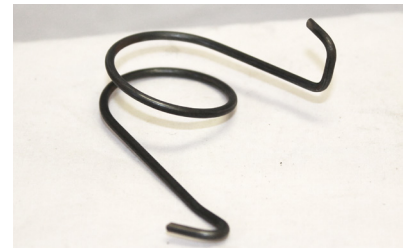
Part Number	Description	Qty. In Stock
#TA-54019	BOLT, TRIP LEVER	1



◆ **NUT #TA-54032**

#TA-54032	NUT, RETAINING	0
-----------	----------------	---

SPRING #TA-54033 ◆



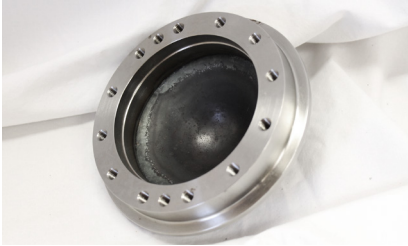
#TA-54033	SPRING, LOCK RETURN	8
-----------	---------------------	---



◆ **BELLOWS #TA-54072**

#TA-54072	ASSY., BELLOWS	1
-----------	----------------	---

Part availability as of April 2024 but subject to prior sale. Part condition is new unless otherwise stated.



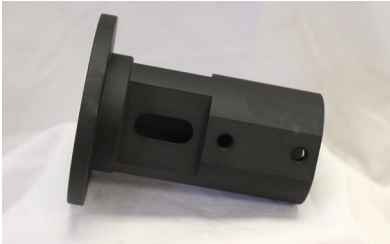
◆ VALVE #TA-54081C

Part Number	Description	Qty. In Stock
#TA-54081C	VALVE	0
#TA-54082D	SEAT, VALVE	0

CAGE HOLDER #TA-54083C ◆



#TA-54083C	HOLDER, CAGE	0
------------	--------------	---



◆ CAGE #TA-54084

#TA-54084	CAGE, B.O.V. BEARING	1
-----------	----------------------	---

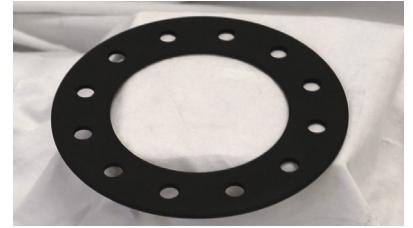
DIAPHRAGM #TA-54085A ◆



#TA-54085A	DIAPHRAGM, B.O.V.	31
------------	-------------------	----

Part availability as of April 2024 but subject to prior sale. Part condition is new unless otherwise stated.

CLAMP #TA-54086A ◆



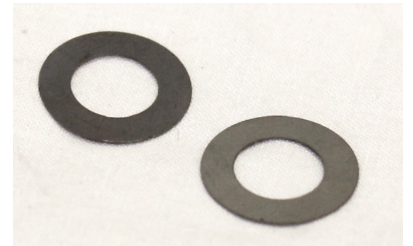
Part Number	Description	Qty. In Stock
#TA-54086A	CLAMP, DIAPHRAGM, B.O.V.	0



◆ **PIN #TA-54087A/2**

#TA-54087A/2	PIN	10
--------------	-----	----

SHIM #TA-54088/1 ◆



#TA-54088/1	SHIM, 0.005"	0
#TA-54088/2	SHIM, 0.002"	47
#TA-54088/3	SHIM, 0.025"	33



◆ **SPRING STOP #TA-54092A**

#TA-54092A	SPRING STOP	0
------------	-------------	---

Part availability as of April 2024 but subject to prior sale. Part condition is new unless otherwise stated.



◆ **GASKET #TA-54097**

Part Number	Description	Qty. In Stock
#TA-54097	GASKET, (LAMINATED BRASS)	5

BEARING #TA-54140A/2 ◆



#TA-54140A/2	BEARING, OIL LITE	7
--------------	-------------------	---



◆ **GASKET #TA-54153**

#TA-54153	GASKET, S.O.V.	8
-----------	----------------	---

WASHER #TA-54174 ◆



#TA-54174	WASHER, THRUST	3
-----------	----------------	---

Part availability as of April 2024 but subject to prior sale. Part condition is new unless otherwise stated.

GASKET #TA-54175 ◆



Part Number	Description	Qty. In Stock
#TA-54175	GASKET	6



◆ **LEVER #TA-54176**

#TA-54176	LEVER, EMERGENCY S.O.V.	1
-----------	-------------------------	---

LID #TA-54177D ◆



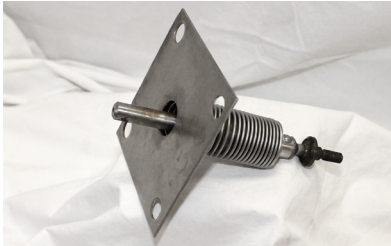
#TA-54177D	LID, EMERGENCY S.O.V.	2
------------	-----------------------	---



◆ **COVER #TA-54181**

#TA-54181	COVER, EMERGENCY S.O.V.	1
-----------	-------------------------	---

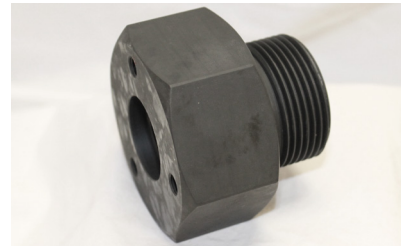
Part availability as of April 2024 but subject to prior sale. Part condition is new unless otherwise stated.



◆ **BELLOWS ASSY #TA-54194**

Part Number	Description	Qty. In Stock
#TA-54194	VALVE ROD & BELLOWS ASSY	11

VALVE REGULATING #TA-54429B / TA-54431A ◆



#TA-54429B / TA-54431A	VALVE BODY, REGULATING	2
------------------------	------------------------	---



◆ **VALVE #TA-54446**

#TA-54446	VALVE TOP, REGULATING	0
-----------	-----------------------	---

ROD #TA-54454A ◆



#TA-54454A	ROD, PUSH	0
------------	-----------	---

Part availability as of April 2024 but subject to prior sale. Part condition is new unless otherwise stated.

NUT #TA-54459 ◆

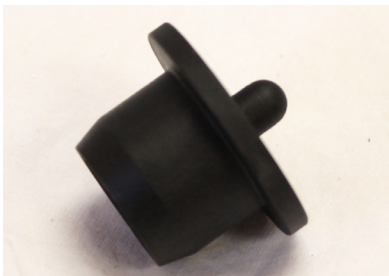

Part Number	Description	Qty. In Stock
#TA-54459	NUT, LOCK, SPECIAL	1


◆ **GUIDE #TA-54460A**

#TA-54460A	GUIDE,PUSH ROD (BUSHED)	2
------------	-------------------------	---

BEARING #TA-54460A/2 ◆


#TA-54460A/2	BEARING, OIL LITE	7
--------------	-------------------	---


◆ **ADJUSTER #TA-54486A**

#TA-54486A	SPRING, ADJUSTER	1
------------	------------------	---

Part availability as of April 2024 but subject to prior sale. Part condition is new unless otherwise stated.



◆ **PLATE #TA-54493A**

Part Number	Description	Qty. In Stock
#TA-54493A	PLATE, MOUNTING	1

PILLAR #TA-54494 ◆



#TA-54494	PILLAR	2
-----------	--------	---



◆ **WASHER #TA-54613**

#TA-54613	WASHER, PACKING	20
-----------	-----------------	----

BELLOWS #TA-54635B ◆



#TA-54635B	ASSY., BELLOWS	1
------------	----------------	---

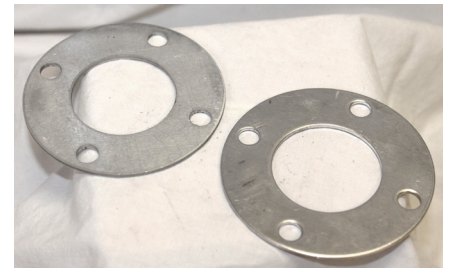
Part availability as of April 2024 but subject to prior sale. Part condition is new unless otherwise stated.

BEARING BALL #TA-54635B/5 ◆

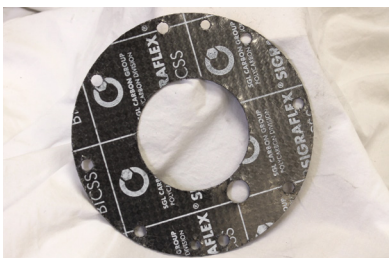

Part Number	Description	Qty. In Stock
#TA-54635B/5	BEARING, BALL SS 1-1/4"	1


◆ **SEAT #TA-54636A**

#TA-54636A	SEAT, VALVE, AUTO DRAIN	4
------------	-------------------------	---

SHIM #TA-54637 ◆


#TA-54637	SHIM	0
#TA-54637/1	SHIM, 1/16" THK SOLID	0
#TA-54637/2	SHIM, 0.002", 31 LAMINATIONS	12


◆ **JOINT #TA-54638**

#TA-54638	JOINT, SWITCH COVER/BELLOWS	0
-----------	-----------------------------	---

Part availability as of April 2024 but subject to prior sale. Part condition is new unless otherwise stated.



◆ **GASKET #TA-54652/1**

Part Number	Description	Qty. In Stock
#TA-54652/1	GASKET, BOV, 1/16" THICK	0
#TA-546552/2	GASKET, BOV, 1/32" THICK	0

PLATE #TA-55051B ◆



#TA-55051B	PLATE, CLUTCH, 2.75 IN LONG	2
#TA-55051C	PLATE, CLUTCH 3.875 IN LG	2
#TA-55051D	PLATE, CLUTCH 6IN LG	3



◆ **SHIM #TA-55067**

#TA-55067	SHIM, SPRING ADJUSTING	4
-----------	------------------------	---

Part availability as of April 2024 but subject to prior sale. Part condition is new unless otherwise stated.

SPINDLE #TA-55079A ◆


Part Number	Description	Qty. In Stock
#TA-55079A	SPINDLE, MOTOR	2


◆ **DOWEL #TA-60011A**

#TA-60011A	DOWEL	22
------------	-------	----

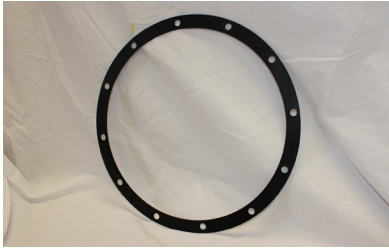
PLATE #TA-60012A ◆


#TA-60012A	PLATE, LOCKING (LARGE)	2
#TA-60013A	PLATE, LOCKING (SMALL)	4


◆ **JOINT #TA-60023A**

#TA-60023A	JOINT, LOCKING PLATE, SHORT	9
#TA-60024A	JOINT, LOCKING PLATE	23

Part availability as of April 2024 but subject to prior sale. Part condition is new unless otherwise stated.



◆ SHIM #TA-62020/1

Part Number	Description	Qty. In Stock
#TA-62020/1	SHIM	4
#TA-62020/2	SHIM	4

BOLT #TA-62116 ◆



#TA-62116	BOLT, FITTING	2
#TA-62116A	BOLT	5



◆ BEARING #TA-64021

#TA-64021	BEARING	2
-----------	---------	---

SPINDLE #TA-64022 ◆



#TA-64022	SPINDLE	1
-----------	---------	---

Part availability as of April 2024 but subject to prior sale. Part condition is new unless otherwise stated.

BOLT #TA-64071 ◆



Part Number	Description	Qty. In Stock
#TA-64071	BOLT, SPECIAL	12



◆ **OILER #TA-64073**

#TA-64073	OILER	4
-----------	-------	---

PLATE #TA-64129A ◆



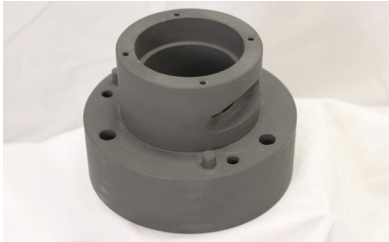
#TA-64129A	PLATE, RETAINING	2
------------	------------------	---



◆ **SHAFT #TA-64133A**

#TA-64133A	SHAFT, LUBE OIL	1
------------	-----------------	---

Part availability as of April 2024 but subject to prior sale. Part condition is new unless otherwise stated.



◆ HOUSING #TA-64134

Part Number	Description	Qty. In Stock
#TA-64134	HOUSING, BEARING	2

PLATE #TA-64136 ◆



#TA-64136	PLATE RETAINING	1
-----------	-----------------	---



◆ JOINT #TA-64137

#TA-64137	JOINT	0
-----------	-------	---

RING #TA-64153A ◆

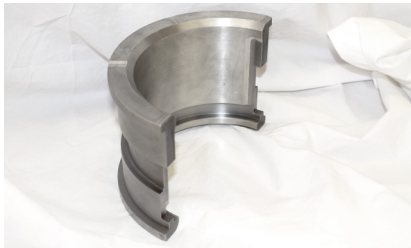


#TA-64153A	RING, OIL RETAINING	2
------------	---------------------	---

Part availability as of April 2024 but subject to prior sale. Part condition is new unless otherwise stated.

BEARING #TA-64196 ◆


Part Number	Description	Qty. In Stock
#TA-64196	SECONDARY BEARING, 12/1500 RPM	2
#TA-64196A	SECONDARY BEARING, 1800 RPM	2


◆ **BEARING #TA-64197**

#TA-64197	BEARING, MAIN	2
-----------	---------------	---

BELLOWS #TA-81034C ◆


#TA-81034C	BELLOWS, INTAKE FLEX	0
------------	----------------------	---


◆ **PIN #TA-82065D/1**

#TA-82065D/1	PIVOT,PIN	1
#TA-82065G	PIN, PIVOT	23

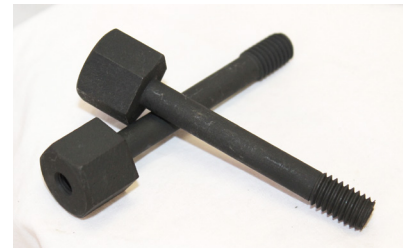
Part availability as of April 2024 but subject to prior sale. Part condition is new unless otherwise stated.



◆ BUSHING #TA-82087

Part Number	Description	Qty. In Stock
#TA-82087	BUSHING	2

BOLT #TA-82089 ◆



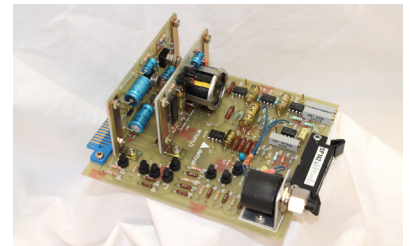
#TA-82089	BOLT, TENSION	15
#TA-82094	BOLT, JACKING	0



◆ SUPPORT #TA-82094A

#TA-82094A	SUPPORT, ADJUSTABLE	0
------------	---------------------	---

BOARD #TB-02101 ◆



#TB-02101	BOARD, PC, INVERTER & REGULATOR	1
#TB-02105	BOARD, PRINTED CIRCUIT, NO. 7	1

Part availability as of April 2024 but subject to prior sale. Part condition is new unless otherwise stated.

SHAFT #TB-04057 ◆



Part Number	Description	Qty. In Stock
#TB-04057	SHAFT, BOBBIN	1



◆ PIPE #TB-04203

#TB-04203	PIPE, FUEL	2
-----------	------------	---

PIPE #TB-05021B ◆



#TB-05021B	OIL SUPPLY PIPE	7
------------	-----------------	---



◆ GASKET #TB-05026A

#TB-05026A	GASKET, NASB CENTRE CASE DRAIN	1
------------	--------------------------------	---

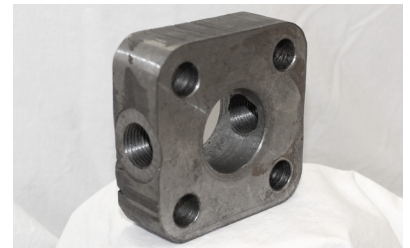
Part availability as of April 2024 but subject to prior sale. Part condition is new unless otherwise stated.



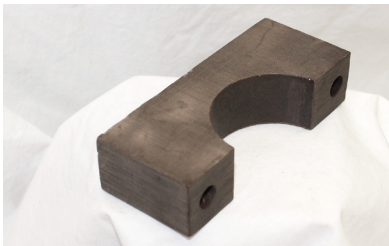
◆ DRAIN #TB-05043A

Part Number	Description	Qty. In Stock
#TB-05043A	DRAIN, LUBE OIL	2

ADAPTOR #TB-06025 ◆



#TB-06025	ADAPTOR	1
-----------	---------	---



◆ CLAMP #TB-06049

#TB-06049	CLAMP, BRACKET	1
-----------	----------------	---

GEAR #TB-07035 ◆



#TB-07035	GEAR PINION 1500 RPM	7
#TB-07036A	GEAR, MACHINE START.(PS5197-01)	4

Part availability as of April 2024 but subject to prior sale. Part condition is new unless otherwise stated.

RING #TB-07041


Part Number	Description	Qty. In Stock
#TB-07041	RING,RETAINING,DRIVESHAFT BRNG	1


STOP #TB-07111

#TB-07111	END STOP	1
-----------	----------	---

STOP PISTON #TB-07121


#TB-07121	PISTON STOP	2
-----------	-------------	---


WASHER #TB-07122

#TB-07122	WASHER	0
-----------	--------	---

Part availability as of April 2024 but subject to prior sale. Part condition is new unless otherwise stated.



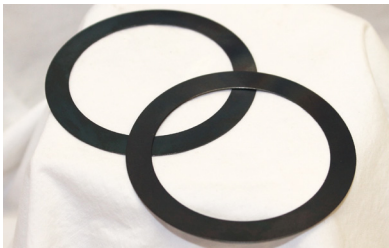
◆ **SPACER #TB-07127**

Part Number	Description	Qty. In Stock
#TB-07127	SPACER	1

GASKET #TB-07131 ◆



#TB-07131	GASKET, STARTER MOTOR ASSY.	7
-----------	-----------------------------	---



◆ **SHIM #TB-07152**

#TB-07152	SHIM	232
-----------	------	-----

STARTER DOG #TB-07153 ◆



#TB-07157B	STARTER DOG	3
------------	-------------	---

Part availability as of April 2024 but subject to prior sale. Part condition is new unless otherwise stated.

BRACKET #TB-07188A ◆



Part Number	Description	Qty. In Stock
#TB-07188A	BRACKET	1



◆ **EXTRACTOR #TB-08102**

#TB-08102	EXTRACTOR DOWEL	1
-----------	-----------------	---

EXTRACTOR #TB-08121 ◆



#TB-08121	EXTRACTOR, DISC BODY	1
-----------	----------------------	---



◆ **BOLTS #TB-08143**

#TB-08143	JACK,BOLTS	3
-----------	------------	---

Part availability as of April 2024 but subject to prior sale. Part condition is new unless otherwise stated.



◆ **ADAPTOR #TB-08144**

Part Number	Description	Qty. In Stock
#TB-08144	ADAPTOR, SPECIAL	0

BAR #TB-08156 ◆



#TB-08156	BAR, EXTENSION	0
#TB-08156M	EXTENSION BAR, MODIFIED	0



◆ **EXTRACTOR #TB-08163**

#TB-08163	EXTRACTOR, BODY DOWEL	1
-----------	-----------------------	---

HOOK #TB-08185 ◆



#TB-08185	LIFTING HOOK	1
-----------	--------------	---

Part availability as of April 2024 but subject to prior sale. Part condition is new unless otherwise stated.

JET BLAST #TB-08273/4 ◆



Part Number	Description	Qty. In Stock
#TB-08273/4	JET BLAST, 3 KG PACKAGES	0



◆ **GAUGE #TB-08285**

#TB-08285	GAUGE, SPEED PROBE	4
-----------	--------------------	---

GAUGE #TB-08328/1 ◆



#TB-08328/1	GAUGE, FUEL VALVE SETTING	0
#TB-08328/2	TOOL, GAS VALVE SETTING HLCV	1



◆ **TOOL #TB-08329**

#TB-08329	ADJUSTING TOOL	0
-----------	----------------	---

Part availability as of April 2024 but subject to prior sale. Part condition is new unless otherwise stated.



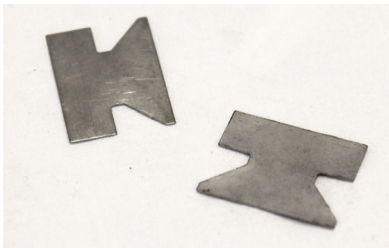
◆ **DOWEL #TB-11017**

Part Number	Description	Qty. In Stock
#TB-11017	DOWEL, LOCATING	8

SPACER #TB-11085/1 ◆



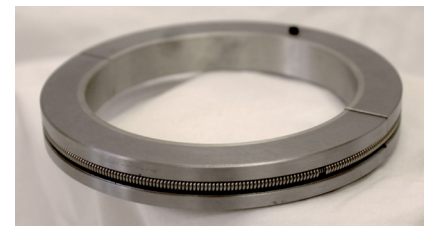
#TB-11085/1	SPACER	5
#TB-11085/2	SPACER	2



◆ **SHIM #TB-11093/1**

#TB-11093/1	SHIM, .010	19
#TB-11093/2	SHIM, .015	23

RING #TB-12014 ◆



#TB-12014	RING, SEALING	0
-----------	---------------	---

Part availability as of April 2024 but subject to prior sale. Part condition is new unless otherwise stated.

SPRING #TB-12014/2 ◆



Part Number	Description	Qty. In Stock
#TB-12014/2	SPRING, GARTER	0



◆ **PAD #TB-12016/2**

#TB-12016/2	PAD, BEARING THRUST	0
-------------	---------------------	---

SCREW #TB-12016/3 ◆



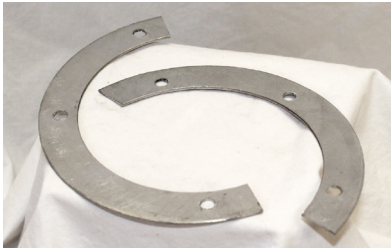
#TB-12016/3	SCREW, RETAINING	17
-------------	------------------	----



◆ **PAD #TB-12016/8**

#TB-12016/8	PAD, END STOP	16
-------------	---------------	----

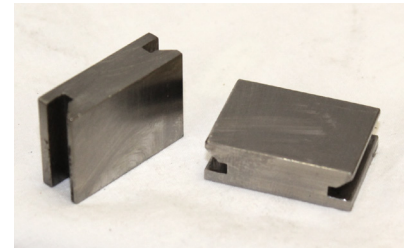
Part availability as of April 2024 but subject to prior sale. Part condition is new unless otherwise stated.



◆ SHIM #TB-12019

Part Number	Description	Qty. In Stock
#TB-12019	SHIM, THRUST BEARING	5
#TB-12024A	SHIM	2

SPACER #TB-13068 ◆



#TB-13068	SPACER,LARGE,1ST & 2ND STAGE	11
#TB-13069	SPACER,SMALL,3,4,5TH STAGE	6
#TB-13073/1	SPACER	8
#TB-13073/2	SPACER	13

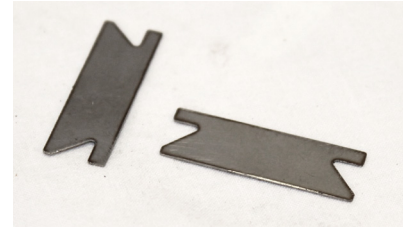


◆ BLOCK #TB-13075A

#TB-13075A	BLOCK, RETAINING	83
------------	------------------	----

Part availability as of April 2024 but subject to prior sale. Part condition is new unless otherwise stated.

◆ SHIM #TB-13088



Part Number	Description	Qty. In Stock
#TB-13088	SHIM	53
#TB-13091	SHIM	54
#TB-13092/1	SHIM	57
#TB-13093	SHIM	70



◆ BOLT #TB-14023

#TB-14023	BOLT, CAPTIVE	44
-----------	---------------	----

JOINT #TB-14076A ◆



#TB-14076A	JOINT	0
#TB-14077B	JOINT	3

Part availability as of April 2024 but subject to prior sale. Part condition is new unless otherwise stated.



◆ **GASKET #TB-14077C**

Part Number	Description	Qty. In Stock
#TB-14077C	GASKET,COVER,CONTROL BOX	0

CONNECTOR #TB-14084 ◆



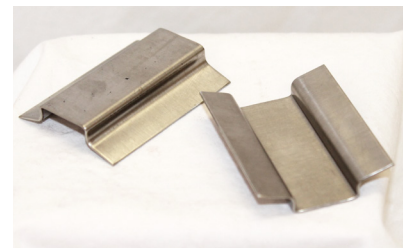
#TB-14084	CONNECTOR	1
-----------	-----------	---



◆ **BOLT #TB-14087**

#TB-14087	BOLT, CAPTIVE	6
-----------	---------------	---

SHROUD #TB-14095A ◆



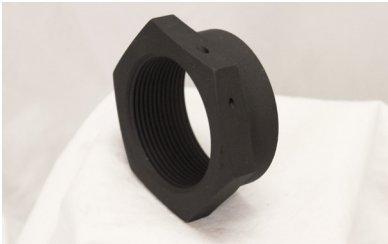
#TB-14095A	SHROUD, BELLOFRAM CYLINDER	5
------------	----------------------------	---

Part availability as of April 2024 but subject to prior sale. Part condition is new unless otherwise stated.

FILTER #TB-14111 ◆



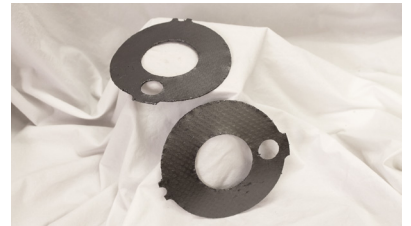
Part Number	Description	Qty. In Stock
#TB-14111	FILTER, AIR SYSTEM	0



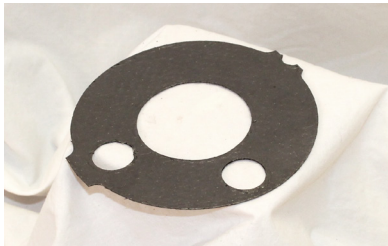
◆ **NUT #TB-21024**

#TB-21024	CLAMP NUT	1
-----------	-----------	---

GASKET #TB-21026A ◆



#TB-21026A	GASKET	11
------------	--------	----



◆ **JOINT #TB-21026F**

#TB-21026F	JOINT	4
------------	-------	---

Part availability as of April 2024 but subject to prior sale. Part condition is new unless otherwise stated.



◆ **WASHER #TB-21027**

Part Number	Description	Qty. In Stock
#TB-21027	WASHER, BURNER INLET FLANGE	93

CARRIER #TB-21032 ◆



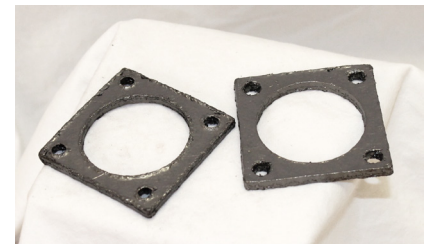
#TB-21032	SPRING CARRIER	6
#TB-21032A	SPRING CARRIER	3



◆ **PLATE #TB-21035**

#TB-21035	PLATE, SUPPORT	11
-----------	----------------	----

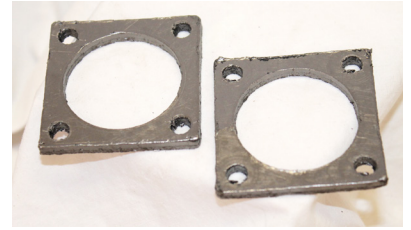
GASKET #TB-21038 ◆



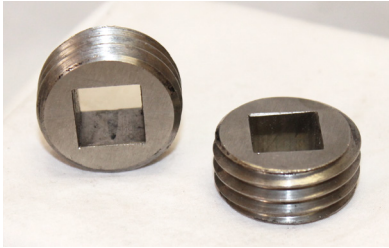
#TB-21038	GASKET, SQUARE, 2"X2"X1/8"	96
-----------	----------------------------	----

Part availability as of April 2024 but subject to prior sale. Part condition is new unless otherwise stated.

JOINT #TB-21038A ◆



Part Number	Description	Qty. In Stock
#TB-21038A	JOINT	2
#TB-21039A	JOINT,HEAD,FLAME FAILURE VIEW	6



◆ **NUT #TB-21046**

#TB-21046	NUT, RETAINER	6
-----------	---------------	---

VALVE #TB-21060 ◆



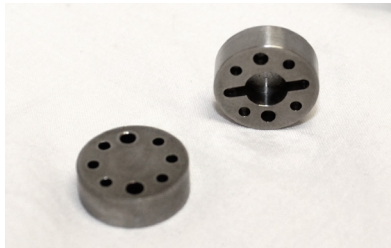
#TB-21060	VALVE, GATE	6
-----------	-------------	---



◆ **GASKET #TB-21073**

#TB-21073	GASKET, COMBUSTION CHAMBER	1
-----------	----------------------------	---

Part availability as of April 2024 but subject to prior sale. Part condition is new unless otherwise stated.



◆ **PLATE #TB-22013C**

Part Number	Description	Qty. In Stock
#TB-22013C	PLATE, BURNER DISTRIBUTOR	6

BLOCK #TB-22020B/1 ◆



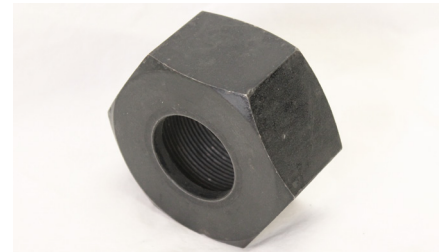
#TB-22020B/1	PURGE BLOCK	1
--------------	-------------	---



◆ **BURNER #TB-22040**

#TB-22040	BURNER	4
-----------	--------	---

NUT #TB-22043 ◆



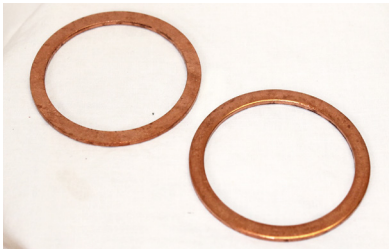
#TB-22043	NUT, RETAINING	1
-----------	----------------	---

Part availability as of April 2024 but subject to prior sale. Part condition is new unless otherwise stated.

SHROUD RING W/ CAPNUT #TB-22045E ◆



Part Number	Description	Qty. In Stock
#TB-22045E	SHROUD RING WITH CAPNUT,TB5000	1



◆ WASHER #TB-22048

#TB-22048	WASHER, COPPER	66
#TB-22048/1	WASHER, COPPER, 1/32"	104
#TB-22048/2	WASHER, COPPER, 1/64"	101

ORIFICE PLATE #TB-22049A/1 ◆



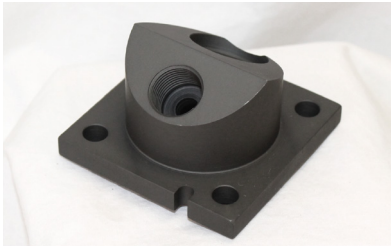
#TB-22049A/1	PLATE, ORIFICE, OIL FUEL BURN.	2
--------------	--------------------------------	---



◆ TABWASHER #TB-22051

#TB-22051	TABWASHER	3
-----------	-----------	---

Part availability as of April 2024 but subject to prior sale. Part condition is new unless otherwise stated.



◆ **BLOCK #TB-23111C**

Part Number	Description	Qty. In Stock
#TB-23111C	BLOCK, IGNITER, HIGH ENERGY	1

NUT #TB-23114 ◆



#TB-23114	NUT, IGNITER RETAINING	6
-----------	------------------------	---



◆ **BOLT #TB-31013**

#TB-31013	BOLT, ROTOR	8
-----------	-------------	---

COLLAR #TB-31017 ◆



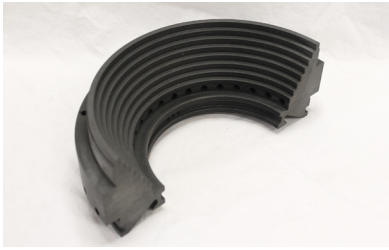
#TB-31017	COLLAR, ROTOR C.T. & P.T.	4
-----------	---------------------------	---

Part availability as of April 2024 but subject to prior sale. Part condition is new unless otherwise stated.

PLUG #TB-31018 ◆



Part Number	Description	Qty. In Stock
#TB-31018	PLUG, ROTOR	8



◆ **SEAL #TB-32017A**

#TB-32017A	SEAL, LABYRINTH	1
#TB-32018F	SEAL, LABY, STUB SHAFT COMPRESSR	0
#TB-32018Z	SEAL, LABYRINTH	1

SHIM #TB-32614A/1 ◆



#TB-32614A/1	SHIM, SOLID, .060"	6
--------------	--------------------	---



◆ **SPACER #TB-32616A/3**

#TB-32616A/3	SPACER	4
--------------	--------	---

Part availability as of April 2024 but subject to prior sale. Part condition is new unless otherwise stated.



◆ **PAD STOP #TB-32616B/2**

Part Number	Description	Qty. In Stock
#TB-32616B/2	PAD STOP, METRIC	9

SCREW #TB-32616B/5 ◆



#TB-32616B/5	SCREW, SOCKETHEAD M4X0.7X12MM	223
--------------	-------------------------------	-----



◆ **SEAL #TB-32617A**

#TB-32617A	SEAL, LABYRINTH	1
------------	-----------------	---

SHIM #TB-32622 ◆



#TB-32622	SHIM, SET	4
-----------	-----------	---

Part availability as of April 2024 but subject to prior sale. Part condition is new unless otherwise stated.

DOWEL #TB-33025 ◆



Part Number	Description	Qty. In Stock
#TB-33025	DOWEL, 13/32" DIA.	15



◆ **PIN #TB-33043**

#TB-33043	PIN, RETAINER	13
-----------	---------------	----

PIN #TB-33043C ◆



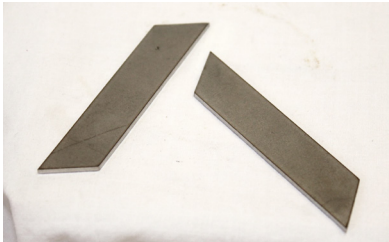
#TB-33043C	STATOR SEGMENT RETAINING PIN	4
------------	------------------------------	---



◆ **PIN #TB-33044C**

#TB-33044C	PIN, STATOR SEG RETNG RELIEVED	4
------------	--------------------------------	---

Part availability as of April 2024 but subject to prior sale. Part condition is new unless otherwise stated.



◆ **SEALING STRIP #TB-33052/13**

Part Number	Description	Qty. In Stock
#TB-33052/13	SEALING STRIP FOR TB-5000	18
#TB-33052/15	SEALING STRIP	45
#TB-33052/16	SEALING STRIP	21
#TB-33052/5	SEALING STRIP	15
#TB-33052/9	SEALING STRIP	45

CONNECTOR #TB-33612 ◆



#TB-33612	CONNECTOR, THERMOCOUPLE	1
#TB-33612A	CONNECTOR, THERMOCOUPLE	43



◆ **GUIDE #TB-34016A**

#TB-34016A	GUIDE, FLAME TUBE EXTENSION	1
------------	-----------------------------	---

Part availability as of April 2024 but subject to prior sale. Part condition is new unless otherwise stated.

PIN #TB-34019 ◆



Part Number	Description	Qty. In Stock
#TB-34019	PIN, SEAL RETAINING	5



◆ **BLOCK #TB-34031**

#TB-34031	BLOCK, RETAINING	0
-----------	------------------	---

RING #TB-34032 ◆



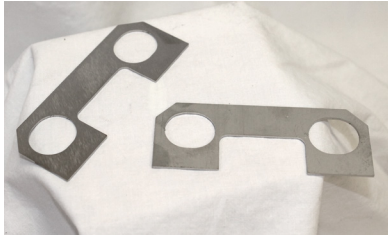
#TB-34032	RING, OUTER SEAL	3
-----------	------------------	---



◆ **PIN #TB-34043**

#TB-34043	PIN, RADIAL DIAL	3
-----------	------------------	---

Part availability as of April 2024 but subject to prior sale. Part condition is new unless otherwise stated.



◆ **LOCKING STRIP #TB-34095**

Part Number	Description	Qty. In Stock
#TB-34095	LOCKING STRIP	2

ADAPTOR #TB-32616B/5 ◆



#TB-50111A	ADAPTOR FOR COMPRESSOR SPEED	0
#TB-50112	ADAPTOR	1



◆ **PLUG #TB-50113**

#TB-50113	PLUG	2
-----------	------	---

SHIM #TB-50118 ◆



#TB-50118	SHIM, PICKUP SPEED	17
-----------	--------------------	----

Part availability as of April 2024 but subject to prior sale. Part condition is new unless otherwise stated.

BOLT #TB-51014 ◆



Part Number	Description	Qty. In Stock
#TB-51014	BOLT, TAPER FITTING	5



◆ **BUSHING #TB-51015B**

#TB-51015B	BUSHING, ACTUATOR SPINDLE	8
------------	---------------------------	---

SPINDLE #TB-51016A ◆



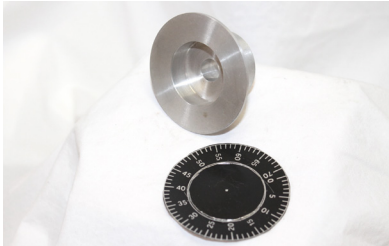
#TB-51016A	SPINDLE, INDICATOR	0
------------	--------------------	---



◆ **SCREW #TB-51020A**

#TB-51020A	SCREW, ADJUSTING	2
------------	------------------	---

Part availability as of April 2024 but subject to prior sale. Part condition is new unless otherwise stated.



◆ INDICATOR #TB-51025A

Part Number	Description	Qty. In Stock
#TB-51025A	DRUM, ANGLE INDICATOR	0

SUB-ASSY. #TB-52005C ◆



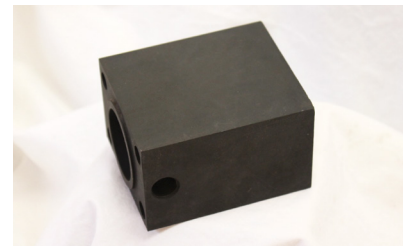
#TB-52005C	LAPPED SUB-ASSY.	6
------------	------------------	---



◆ THROTTLE #TB-52008C

#TB-52008C	THROTTLE,LAPPED	1
------------	-----------------	---

BODY #TB-52016B ◆



#TB-52016B	BODY, BALL VALVE	7
------------	------------------	---

Part availability as of April 2024 but subject to prior sale. Part condition is new unless otherwise stated.

CYLINDER #TB-52029C ◆



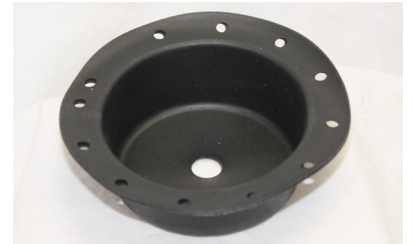
Part Number	Description	Qty. In Stock
#TB-52029C	CYLINDER SECTION	8



◆ **VALVE #TB-52038B**

#TB-52038B	VALVE, INLET	5
------------	--------------	---

DIAPHRAGM #TB-52043B ◆



#TB-52043B	DIAPHRAGM, ROLLING	47
------------	--------------------	----



◆ **CYLINDER AND SLEEVE #TB-52103C**

#TB-52103C	ASSY., CYLINDER AND SLEEVE	2
------------	----------------------------	---

Part availability as of April 2024 but subject to prior sale. Part condition is new unless otherwise stated.



◆ SPINDLE #TB-52118Z

Part Number	Description	Qty. In Stock
#TB-52118Z	SPINDLE, VALVE	4

SLEEVE #TB-52127B ◆



#TB-52127B	SLEEVE, VALVE	2
#TB-52128A	SLEEVE, RETAINING	4



◆ ADJUSTER #TB-52133

#TB-52133	ADJUSTER,ECCENTRIC,SLEEVE ASSY	1
#TB-52133Z	ADJUSTER, ECCENTRIC	1

SHIM #TB-54014 ◆



#TB-54014	SHIM	12
-----------	------	----

Part availability as of April 2024 but subject to prior sale. Part condition is new unless otherwise stated.

DISTANCE PIECE #TB-54031A ◆



Part Number	Description	Qty. In Stock
#TB-54031A	DISTANCE PIECE	3
#TB-54031P	DISTANCE PIECE	1



◆ **FOLLOWER #TB-54036**

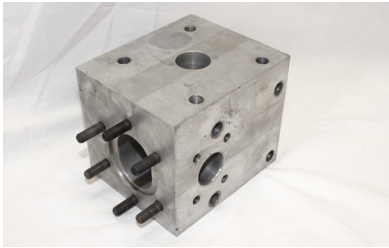
#TB-54036	FOLLOWER, OPERATING RCD	1
-----------	-------------------------	---

GASKET #TB-54042 ◆



#TB-54042	GASKET, INSULATING BOV	0
#TB-54043	GASKET, INSULATING	0

Part availability as of April 2024 but subject to prior sale. Part condition is new unless otherwise stated.



◆ VALVE BODY #TB-54047A

Part Number	Description	Qty. In Stock
#TB-54047A	BODY, VALVE	1

VALVE BODY #TB-54411A ◆



#TB-54411A	VALVE BODY	0
------------	------------	---



◆ VALVE SPINDLE #TB-54412A

#TB-54412A	VALVE SPINDLE	0
------------	---------------	---

SPRING CARRIER #TB-54413A ◆



#TB-54413A	SPRING, CARRIER	0
------------	-----------------	---

Part availability as of April 2024 but subject to prior sale. Part condition is new unless otherwise stated.

SPRING RETAINER #TB-54414C ◆



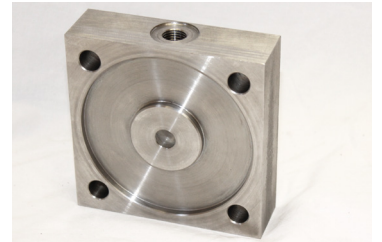
Part Number	Description	Qty. In Stock
#TB-54414C	SPRING, RETAINER	0



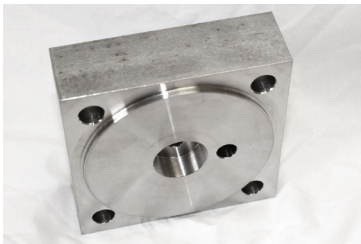
◆ **CLAMP #TB-54415A**

#TB-54415A	RING, CLAMP	0
------------	-------------	---

COVER #TB-54417B ◆



#TB-54417B	COVER, SPRING ASSY.	0
------------	---------------------	---



◆ **COVER #TB-54418A**

#TB-54418A	COVER, DIAPHRAGM ASSY.	0
------------	------------------------	---

Part availability as of April 2024 but subject to prior sale. Part condition is new unless otherwise stated.



◆ VALVE BODY #TB-54419B

Part Number	Description	Qty. In Stock
#TB-54419B	PILOT VALVE BODY	0

VALVE SEAT #TB-54421 ◆



#TB-54421	SEAT, VALVE	6
-----------	-------------	---



◆ VALVE #TB-54422

#TB-54422	VALVE, PILOT	1
-----------	--------------	---

SPRING #TB-54424A ◆



#TB-54424A	SPRING, .312 OIL TEMPERED	0
------------	---------------------------	---

Part availability as of April 2024 but subject to prior sale. Part condition is new unless otherwise stated.

END CAP #TB-56211 ◆



Part Number	Description	Qty. In Stock
#TB-56211	END CAP	2



◆ **SLEEVE #TB-56212**

#TB-56212	SLEEVE, SPRING LOCATION	3
#TB-56213	SLEEVE, SPRING LOCATION	2

BRACKET #TB-56214 ◆



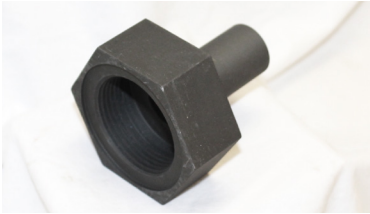
#TB-56214	BRACKET	8
-----------	---------	---



◆ **VALVE BODY #TB-56215**

#TB-56215	VALVE BODY	4
-----------	------------	---

Part availability as of April 2024 but subject to prior sale. Part condition is new unless otherwise stated.



◆ ADAPTER #TB-56216

Part Number	Description	Qty. In Stock
#TB-56216	NUT, ADAPTER	4

SLEEVE #TB-62014 ◆



#TB-62014	SLEEVE, RETAINING	2
-----------	-------------------	---



◆ BEARING #TB-64027

#TB-64027	BEARING CARRIER	1
-----------	-----------------	---

STUB SHAFT #TB-64029B ◆



#TB-64029B	STUB SHAFT	2
------------	------------	---



◆ SHIM #TB-64035

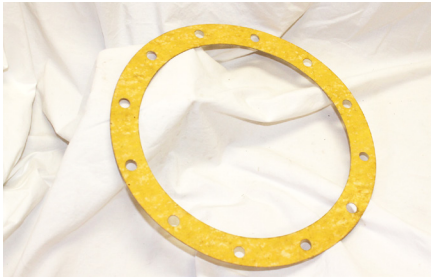
#TB-64035	SHIM, BEARING CARRIER	6
-----------	-----------------------	---

Part availability as of April 2024 but subject to prior sale. Part condition is new unless otherwise stated.

PLATE #TB-64039A ◆



Part Number	Description	Qty. In Stock
#TB-64039A	PLATE, LOCKING	6



◆ **GASKET #TB-64053**

#TB-64053	GASKET	0
-----------	--------	---

RETAINER #TD-12019 ◆



#TD-12019	BLOCK, RETAINER	5
-----------	-----------------	---



◆ **SPACER #TD-34017**

#TD-34017	SPACER	3
-----------	--------	---

Part availability as of April 2024 but subject to prior sale. Part condition is new unless otherwise stated.



◆ RING #TE-54012

Part Number	Description	Qty. In Stock
#TE-54012	RING, ECCENTRIC	0

PLUG #TE-54014 ◆



#TE-54014	PLUG, SCREWED	4
-----------	---------------	---



◆ HANDLE #TE-54022A

#TE-54022A	HANDLE	1
------------	--------	---

SHIM #TF-64051 ◆



#TF-64051	SHIM	11
-----------	------	----

Part availability as of April 2024 but subject to prior sale. Part condition is new unless otherwise stated.

